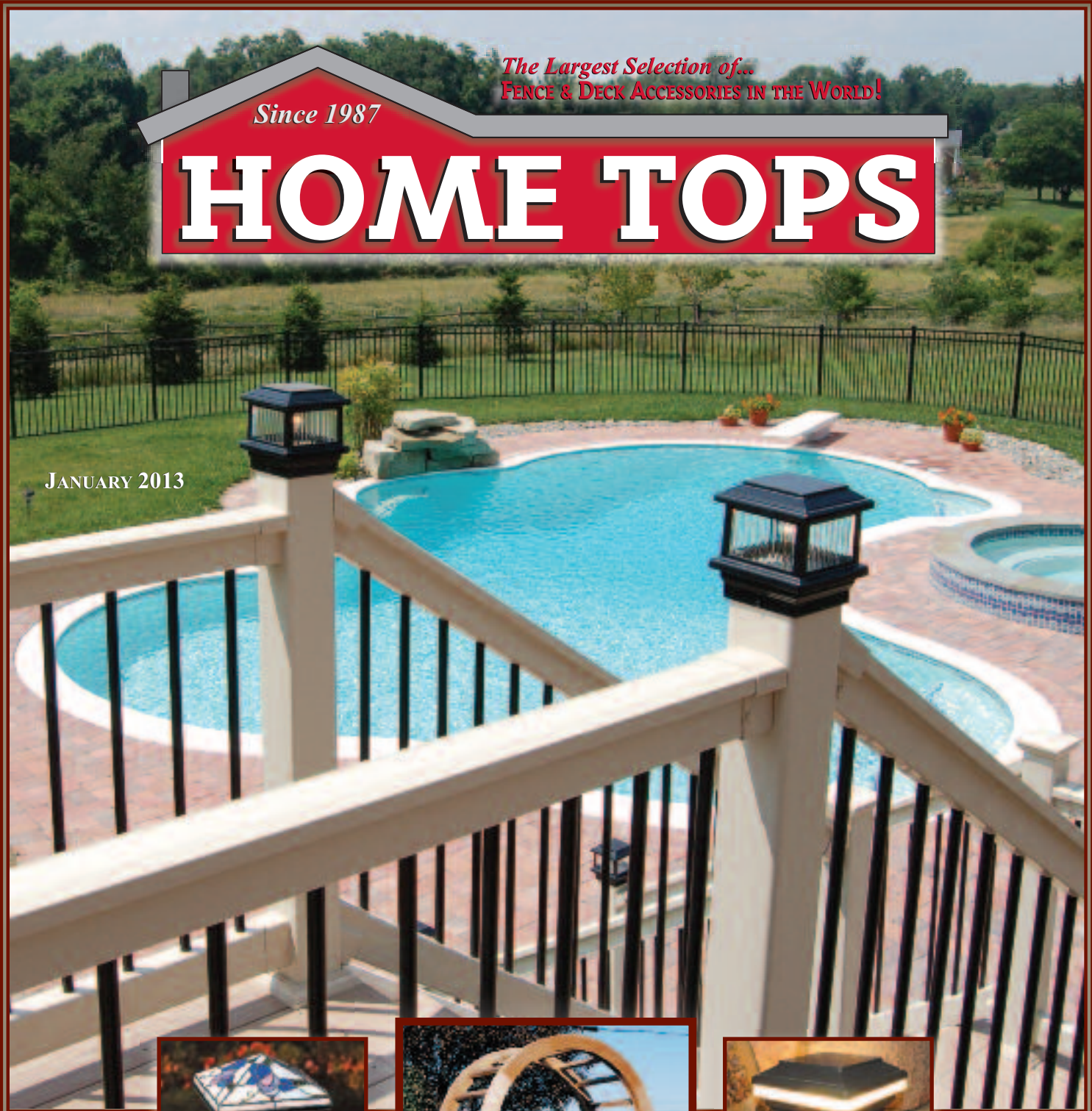


Since 1987

The Largest Selection of...  
FENCE & DECK ACCESSORIES IN THE WORLD!

# HOME TOPS

JANUARY 2013



# Aurora

## DECK LIGHTING



Introducing Two  
**NEW GREEN** Products by  
**Aurora DECK LIGHTING...**

- PHOENIX Recessed L.E.D. Lighting Kit
- ODYSSEY Recessed L.E.D. Lighting Kit

### PHOENIX RECESSED L.E.D. LIGHTING

#### The Numerous Benefits of the PHOENIX Recessed L.E.D. Lighting...

- Uses Less than 5 Watts on a 10 Light System
- LED Bulbs Last up to 25 Years
- Create a Soft Accent on the Deck or Railing
- Illuminate Stairs, Walkways and Docks
- Solid Cast Aluminum Body, Polycarbonate Lens
- Can be Used with or without the Remote Control
- Operate up to 40 Phoenix LED Lights
- Actual Size: 1 1/8" Overall Diameter, 1 1/2" Deep



• Easy to Use Remote Control



#### The PHOENIX Recessed L.E.D. Lighting Kit Includes All that You'll Need for Easy Installation!



- 10 Recessed LED Lights
- DC Transformer
- Remote Control with Driver
- 100' Wire and Connectors
- Detailed Installation Instructions

#### The PHOENIX Recessed L.E.D. Lights

are available to expand up to a maximum of 40 Phoenix L.E.D.'s on one transformer!

These additional lighting kits are available in...

- 2 Pack
- 10 Pack



• LED Color Choices: Cool White, Warm White, Cobalt Blue



#### Installers Bit...

This optional accessory bit will drill and countersink your hole in one step. Simplify and speed up the installation process with this optional two-step drill bit.



### ODYSSEY RECESSED L.E.D. LIGHTING

#### Aurora DECK LIGHTING's Design Team has Broken New Ground in LED Lighting with the Introduction of the ODYSSEY LED STRIP LIGHTING KIT!

- Each kit comes complete with four strips of LED lights installation wire, our pigtail connectors, the LED Driver Box with timer, Remote Driver, and remote control
  - Four Lengths to Choose from 18", 24", 36" or 48"
- Expansion strips are available and up to 20 feet of strip lights can be powered by a single LED Driver Box

#### ODYSSEY ALUMINUM CHANNEL!

• Mounts to ANY Flat Surface

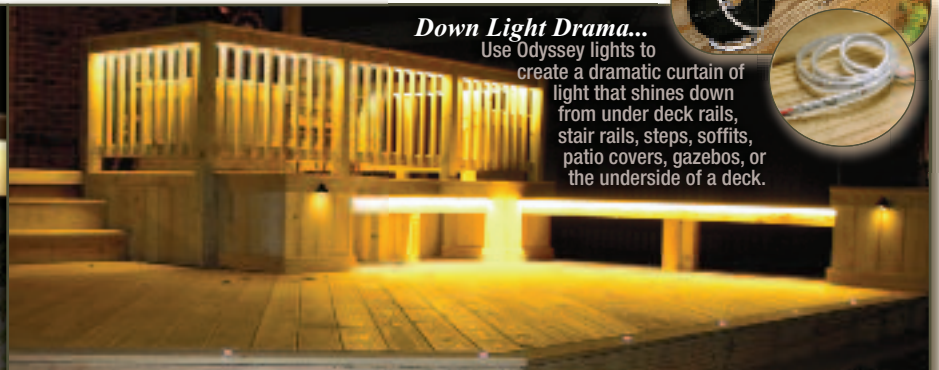


#### Long Lasting LEDs...

Each tiny light bulb in the chain puts out a beam of light with a 120 degree radius!

#### Down Light Drama...

Use Odyssey lights to create a dramatic curtain of light that shines down from under deck rails, stair rails, steps, soffits, patio covers, gazebos, or the underside of a deck.



# Aurora

## DECK LIGHTING

**Aurora DECK LIGHTING**  
*Customers Appreciate the  
 Functional Down Lighting  
 that Eliminates Glare and  
 Utilizes the Power of the Sun!*

### POLARIS SOLAR DECKLIGHTING SERIES



**SOLAR!**

**THE POLARIS...**  
*Radiates the Night Through  
 Solar Power!*

- Powerful Solar Cell Illuminates up to 14 Hours
- Fits a Wide Range of Post Sizes
- Durable Weatherproof Finish
- 2 NiCad Batteries Included
- 2 White L.E.D. Bright Bulbs
- Solid Cast Aluminum
  - Safe and Sturdy
  - Easy to Install

*Illuminate  
 Your Walkway  
 with Solar Power!*

- Available Sizes:  
 2", 2-1/2"



**SOLAR!**



- Available Sizes:  
 3", 3-1/2", 4", 4-3/8", 4-5/8",  
 5", 5-1/2", 6", 6-1/2"

- Color Choices:  
 White, Natural Brown,  
 Black, Bronze, Tan, Clay

*(Not all color choices available  
 in all sizes and styles.)*

### PEGASUS SOLAR POST CAP LIGHT



**Powered by the Sun...**

The Pegasus solar cell absorbs the sun's rays to turn lights on automatically at dusk for hours of soft night light glow!

*Brighten  
 Your Pathway  
 to Safely See  
 Your Way  
 Through the  
 Night!*

**THE SOLAR-POWERED PEGASUS...**  
*Shines Four Spots of Bright LED Light from Fence or Deck Posts  
 onto Surfaces below from a Sleek, Low Profile Cap  
 of Top Quality Aluminum.*

*Easy Mount Style...*

Our solar cap requires no wiring and easily installs onto composite or wood posts in sizes from 3-1/2" to 4-3/8".

**SOLAR!**

*The Pegasus is Available  
 in Three Popular, Weather Resistant Color Finishes!*

- Available Sizes & Colors:  
 3-1/2" Black, Bronze, White • 4-3/8" Black, Bronze, White  
 4-5/8" Black, Bronze, White • 4" Black, Bronze, White  
 5" Black, White • 5-1/2" Black, Bronze, White
- Solar Post Cap Includes: Four L.E.D. Bulbs & Two NiCad Batteries



# Aurora

## DECK LIGHTING

### Aurora DECK LIGHTING Features the Following...

- Color Choices:  
White, Natural Brown,  
Black, Bronze, Clay, Tan
  - Wiring Available In:  
25 Watt - 110 Volt and 18 Watt - 12 Volt
  - Durable Weatherproof Powder Coat Finish
  - Sizes: 2", 2-1/2", 3", 3-1/2", 4",  
4-3/8", 5", 5-1/2", 6", 6-1/2"
- (Not all color choices available in all sizes and styles.)



### ORION DECKLIGHT



**THE ORION...**  
*Beautiful, Geometric  
Shape Adds Another  
Level of Distinction  
Regardless of the  
Time of Day!*

- Made of Solid Cast Aluminum
- Ribbed Glass is Standard,  
Crystallized Glass Purchased  
Separately

**THE SIRIUS...**  
*Traditional Appeal  
with its Pyramid  
Shaped Design!*

- Crystallized Glass is Standard,  
Ribbed Glass Purchased  
Separately

### SIRIUS DECKLIGHT



### TITAN DECKLIGHT



**THE TITAN...**  
*Classic Appeal  
with its Multilayered  
Rectangler Design!*

- Ribbed Glass is Standard,  
Crystallized Glass  
Purchased Separately

*Aurora...*  
*Simply Extraordinary!*

**THE ZENITH...**  
*Modern Appeal  
Featuring an  
Illuminated Crystal Ball!*

- Ribbed Glass is Standard,  
Crystallized Glass  
Purchased Separately

### ZENITH DECKLIGHT



### MATCHING POST CAPS

*Aurora DECK LIGHTING Features an Array of Matching Post Caps for Each Lighting Style!*

- Available Sizes: 3-1/2", 4", 4-3/8", 5", 5-1/2", 6"
- Made of Maintenance Free Powder Coated Aluminum



# Aurora

## DECK LIGHTING

**AURORA DECK LIGHTING**  
*Creates Lighting Products  
 to Provide the Perfect  
 Finishing Touch that Changes  
 the Ordinary Deck  
 to Extraordinary!*

### IRIS ANELLO L.E.D. POST CAP

### SATURN ANELLO L.E.D. POST CAP

#### *Create a Soft Ring of Light to Accent Your Deck Railing!*

These LED post cap lights use the latest technology to illuminate the acrylic lens and positively impact the outdoor living experience.

#### **These Extraordinary LED Post Cap Lights Illuminate the Night Using Only *ONE WATT* of Electricity!**

- Connects to Standard 12 Volt Low Voltage System
- Color Choices: White, Tan, Natural Brown, Clay, Bronze, Black, Metallic Copper
- Sizes: 3-1/2", 4", 4-3/8", 4-5/8", 5", 5-1/2", 6", 6-1/2"



**NEW**  
 5-1/2", 6", 6-1/2"  
**SIZES!**

### NOVA L.E.D. POST CAP

### ECLIPSE L.E.D. POST CAP



#### ***L.E.D. Decklight Bulbs are Directional, Providing a Soft Accent Down Your Railing Post!***

L.E.D.'s drive their light in one direction, so that you have light exactly where you want it. An L.E.D. light bulb has an average life of up to 30,000 hours. That averages out to 6 hours of light per day for 12 years.

- Provides a Warm Accent to Your Fence or Deck Railing
- Connects to Standard 12 Volt Low Voltage System
- Four Bright L.E.D. Bulbs

- Color Choices: White, Tan, Natural Brown, Clay, Bronze, Black

- Sizes: 3-1/2", 4", 4-3/8", 4-5/8", 5", 5-1/2", 6", 6-1/2"  
(Not all color choices available in all sizes and styles.)



Nova L.E.D. Post Cap Decklight

Eclipse L.E.D. Post Cap Decklight

# Aurora

DECK LIGHTING

**Aurora DECK LIGHTING'S  
COSMIC STAR LIGHTS...**  
*are Small Post Lamps Designed for  
Deck or Fence Posts or Any Surface  
Where a Spot of Light is Desired  
to Aid Safe Footing or  
Provide Accent Lighting!*

## COSMIC STAR LIGHT COLLECTION

### ARIEL PATHWAY LIGHT...

*Horizontal Beams of Light Create  
Warm Patterns of Accent Lighting!*

- Well Designed Directional Lighting for Stairs, Decks, etc.
- Cast Aluminum Housing
- Robust 18 Watt Bulb
- Color Choices:  
White, Natural Brown, Bronze, Black
- Size:  
3-1/4" Wide x 4-1/2" High



### QUASAR PATHWAY LIGHT...

*One of Our Brightest Lights  
Sure to Illuminate Your Pathway!*

- Wiring Available In:  
18 Watt - 12 Volt
- Color Choices:  
White, Black, Bronze, Tan, Clay
- Size:  
3-1/4" Wide x 4-1/2" High

*Perfect for Lighting Stairways!*



### VEGA POST LIGHT...

*Our Newest Star: a Solid Cast  
Aluminum Funnel Light Featuring  
a Bright LED Bulb!*

- 12V, 1W Warm White LED Bulb
- Color Choices: White, Black, Bronze
- Size: 3-1/4" Wide x 2-1/2" High

*Designed to Operate on  
an A/C Transformer  
and will Integrate  
with the Rest  
of the Aurora Line!*



### PYXIS RECESSED STAIR LIGHT...

*Perfect Pyxis Vents Light for Stair Safety  
and Recessed Rays of Light!*

- Optimal Light Output for Recessed Stair Risers
- 18 Watt Bulb Included
- Color Choices:  
White, Natural Brown, Bronze, Black

- Size:  
7" Wide x 3-1/2" High



### NEBULA EYEBALL LIGHT...

*A Sphere of Two-Toned Light,  
Available in Five Illuminating Colors!*

- Low Profile Cast Aluminum Designed Housing
- 12V, Illuminates Stairs, Decks, Landscape, etc.
- 4 LED Bulbs, 1.5 Watt, Warm White

*Designed to Operate on an A/C Transformer  
and will Integrate with the Rest  
of the Aurora Line!*

- Color Choices: White, Natural Brown, Bronze, Black
- Size: 3-1/4" Diameter



### CORONA RECESSED RISER LIGHT...

*Casts a Soft Light for Stair Safety!*

- 1.5 Watt LED Bulb
- Face Plate: 2-3/4" x 4-1/2"
- Durable, Weatherproof Powder Coat Finish
- Color Choices:  
White, Black, Bronze



# HIGHPOINT

DECK LIGHTING

These Fixtures  
Were Created  
to compliment the  
most simplistic to  
artistic design schemes!

*The Deck...* is an extension of the home, HIGHPOINT DECK LIGHTING provides the means by which customers can carry the same level of design sophistication from the inside of their homes to their outdoor living environment. Offering the most expansive range of deck lighting in the industry, including custom lights, HIGHPOINT models are distinctive and stylish products, not typically available through standard retail outlets. We specialize in matching current fashion trends into our lighting arrangements, so decks can be true extension of the home's décor.



**NEW!**

## RECESSED STEP LIGHTING FIXTURES

|  |  |   |  |   |
|--|--|---|--|---|
| <p><i>Apex</i> (HP-740R)<br/>Size: 3-1/2" W x 3-1/2" H x 1/4" D<br/>Finishes: Antique Bronze, Brushed Stainless, Midnight Black, Solid Copper</p>             | <p><i>Berkley</i> (HP-712R)<br/>Size: 3-1/2" W x 3-1/2" H x 1/4" D<br/>Finishes: Antique Bronze, Black, Brushed Stainless, Solid Copper, White Powder Coat</p>  | <p><i>Estes</i> (HP-761R)<br/>Size: 4" W x 3-1/2" H x 1/4" D<br/>Finishes: Antique Bronze, Brushed Stainless, Midnight Black, Solid Copper, White Powder Coat</p>  | <p><i>Genesis</i> (HP-714R)<br/>Size: 4" W x 3-1/2" H x 1/4" D<br/>Finishes: Antique Bronze, Antique Copper, Brushed Stainless, Midnight Black, White Powder Coat</p>  | <p><i>Golden Gate</i> (HP-718R)<br/>Size: 3-1/2" W x 3-1/2" H x 1/4" D<br/>Finishes: Antique Bronze, Brushed Stainless, Midnight Black</p>                             |
| <p><i>Lake Powell</i> (HP-735R)<br/>Size: 4" W x 3-1/2" H x 1/4" D<br/>Finishes: Antique Bronze, Antique Copper, Black, Brushed Stainless, Solid Copper</p>  | <p><i>Moab</i> (HP-725R)<br/>Size: 3-1/2" W x 3-1/2" H x 1/4" D<br/>Finishes: Antique Bronze, Brushed Stainless, Midnight Black, Solid Copper</p>             | <p><i>Mt. Evans</i> (HP-732R)<br/>Size: 4" W x 3-1/2" H x 1/4" D<br/>Finishes: Antique Bronze, Black, Brushed Stainless, White Powder Coat</p>                   | <p><i>Pikes Peak</i> (HP-744R)<br/>Size: 4" W x 3-1/2" H x 1/4" D<br/>Finishes: Antique Bronze, Black Powder Coat, Midnight Black</p>                                | <p><i>Yellow Stone</i> (HP-768R)<br/>Size: 3-1/2" W x 3-1/2" H x 1/4" D<br/>Finishes: Antique Bronze, Black, Brushed Stainless, Solid Copper, White Powder Coat</p>  |

## BRICK LIGHTING FIXTURES

|   |  |  |  |
|---|--|--|--|
| <p><i>Genesis</i> (HP-771R)<br/>Size: 8-3/4" W x 3" H<br/>Finishes: Antique Bronze, Brushed Stainless, Midnight Black, Solid Copper, White Powder Coat</p>  | <p><i>JTD</i> (HP-772R)<br/>Size: 8-3/4" W x 3" H<br/>Finishes: Antique Bronze, Midnight Black</p>  | <p><i>Mt. Evans</i> (HP-774R)<br/>Size: 8-3/4" W x 3" H<br/>Finishes: Antique Bronze, Black, Midnight Black</p>    | <p><i>Yellowstone</i> (HP-770R)<br/>Size: 8-3/4" W x 3" H<br/>Finishes: Antique Bronze, Brushed Stainless, Midnight Black, Solid Copper, White Powder Coat</p>  |
| <p><b>NEW!</b></p>    | <p><i>Brick Light Box</i> (HP-779R)<br/>Size: 8" W x 2-1/2" H x 3-1/2" D</p>                        | <p><i>Wedge Base LED</i> (HP-960-L15)<br/>Recommended usage for all lighting fixtures located on this page.<br/>It has a 25,000 hour lifetime average!<br/>This bulb only uses 4 W.</p>  |   |

# HIGHPOINT

DECK LIGHTING

*The Deck..* is an extension of the home, HIGHPOINT DECK LIGHTING provides the means by which customers can carry the same level of design sophistication from the inside of their homes to their outdoor living environment. Offering the most expansive range of deck lighting in the industry, including custom lights, HIGHPOINT models are distinctive and stylish products, not typically available through standard retail outlets. We specialize in matching current fashion trends into our lighting arrangements, so decks can be true extension of the home's décor.



**NEW!**

## RAILING LIGHT FIXTURES



*Apex* (HP-555P)

Size: 4-1/4" W x 5-1/4" H x 2-1/8" D  
Finishes: Antique Bronze, Black, Brushed Stainless, Solid Copper



*Aspen* (HP-578P)

Size: 4-1/4" W x 5-1/4" H x 2-1/8" D  
Finishes: Antique Bronze, Black, Brushed Stainless, Solid Copper



*Berkley* (HP-570P)

Size: 3-3/8" W x 4" H x 1-7/8" D  
Finishes: Antique Bronze, Black, Brushed Stainless, Solid Copper, White Powder Coat



*Clear Creek* (HP-560P)

Size: 3-1/4" W x 3-3/4" H x 1-5/8" D  
Finishes: Antique Bronze, Black, Brushed Stainless, White Powder Coat



*Estes* (HP-571P)

Size: 3-3/8" W x 3-3/8" H x 1-7/8" D  
Finishes: Antique Bronze, Antique Copper, Black, White Powder Coat



*Genesis* (HP-550P)

Size: 3-1/2" W x 3-3/4" H x 2" D  
Finishes: Antique Bronze, Brushed Stainless, Midnight Black, Solid Copper



*Lake Powell* (HP-535P)

Size: 3-1/2" W x 4-1/2" H x 2-1/4" D  
Finishes: Antique Bronze, Antique Copper, Brushed Stainless, Midnight Black, Solid Copper



*JTD* (HP-504P)

Size: 2-7/8" W x 3-1/2" H x 1-1/2" D  
Finishes: Antique Bronze, Brushed Stainless, Midnight Black



*Golden Gate* (HP-580P)

Size: 2-7/8" W x 4-1/4" H x 1-1/2" D  
Finishes: Antique Bronze, Brushed Stainless, Midnight Black



*Moab* (HP-512P)

Size: 3" W x 3-1/4" H x 1-3/4" D  
Finishes: Antique Bronze, Brushed Stainless, Midnight Black, Solid Copper



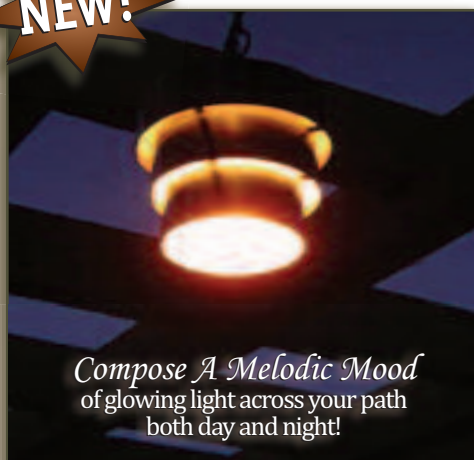
*Pikes Peak* (HP-591P)

Size: 2-7/8" W x 4-1/4" H x 1-1/2" D  
Finishes: Antique Bronze, Midnight Black



## WALL & HANGING LIGHT FIXTURES

**NEW!**



*Compose A Melodic Mood*  
of glowing light across your path  
both day and night!

*Aspen* (HP-667W)

Size: 8" W (top) - 3-1/2" W (bottom) x 10" H x 5" D  
Finishes: Antique Bronze, Brushed Stainless, Midnight Black, Solid Copper



*Berkley* (HP-663W)

Size: 8" W x 10" H x 5" D  
Finishes: Antique Bronze, Brushed Stainless, Midnight Black, Solid Copper



*Aspen* (HP-447H)

Size: 4-3/4" W (top) - 3-1/2" W (bottom) x 6-1/4" H  
Finishes: Antique Bronze, Midnight Black, Solid Copper



*Berkley* (HP-446H)

Size: 4-3/4" W x 6-1/4" H  
Finishes: Antique Bronze, Midnight Black, Solid Copper





# HIGHPOINT

DECK LIGHTING



**NEW!**

*The Design...* HIGHPOINT offers a refined palette of creative lighting options to help beautify the consumer's living spaces.



## MINI LIGHT FIXTURES

### Endurance Round (HP-777R)

Size: 1-3/16" W x 3/8" D (7/8" Round)  
 Finishes: Antique Bronze, Black Powder Coat, Brushed Stainless, Oil Rubbed Brass, White Powder Coat

Our popular recessed Endurance Round is available in 8 & 16 lighting kits - making your job more easily affordable!



### Endurance Round Kits



## PATHWAY FIXTURE

### Berkley (HP-106L)

Size: 5-1/2" W x 20" H  
 Finishes: Antique Bronze, Solid Copper



## UP TREE FIXTURE

### Blue Spruce Tree Litter (HP-151L)

Size: 2-3/4" W x 9-1/4" H  
 Finishes: Antique Bronze



## SURFACE FIXTURES

### Adj. Mini Spot Light (HP-559S)

Size: 3-3/4" W x 1-7/8" H x 2-3/4" D  
 Finishes: Black Powder Coat



### Peak To Peak (HP-204S)

Size: 2-1/2" W x 5-1/2" H x 3-1/8" D  
 Finishes: Antique Bronze, Black Powder Coat



## LIGHTING FIXTURE ACCESSORIES

### 100W Transformer (HP-100T)

Features:  
 Built-in photo eye for dusk to dawn operation, stainless steel case, easy operation, circuit breaker, deep lugs easily accepts (2) 12 Ga. wires for use with multi-runs.



### 3" Bore Bit (HP-990A)

Size: 3" Round

Our Bore Bits simplify the installation process for all of our step light applications.

Not used for our Brick Light Collection.



### Wedge Base LED (HP-960-L15)

Recommended usage for all lighting fixtures located on this page.  
 It has a 25,000 hour lifetime average!  
 This bulb only uses 4 W.



### 250W Transformer (HP-250T)

Features:  
 Built-in photo eye for dusk to dawn operation, stainless steel case, easy operation, circuit breaker, deep lugs easily accepts (2) 12 Ga. wires for use with multi-runs.



### Direct Bury Wire Nuts (HP-955A-10)

Specifications:  
 Silicone Filled, Up To 8-2 Wire



Count:  
 10 Pack

### Dry Connect Wire Nuts (HP-956A-25)

Specifications:  
 Silicone Filled, Up To 12-2 Wire



Count:  
 25 Pack

### Wire Nuts

Specifications:  
 Silicone Filled - Wet Connect  
 • Up To 12-2 Wire (HP-953A)  
 • Up To 18-2 Wire (HP-954A)

Available Counts:  
 16, 20, 100 Pack



# DEKOR™

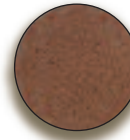
## COLOR SELECTIONS

*Gorgeous Color Selections to Match and Enhance Your Decor!*

• 4 Colors to Choose from...



Hammered Bronze



Oil Rubbed Bronze



Antique Metal Black



Dark Copper Vein

## DEK DOT RECESSED LIGHTING COLLECTION



*The NEW Dek Dots from DEKOR™ are Unique in That, They Use a Solid Transparent Polycarbonate Lens, and Install Totally Flush with the Surface, Making Them Virtually Unseen - and "Unfelt" Underfoot!*

These tiny Dek Dots LED recessed lights are nearly indestructible... will withstand years of "wear and tear"!

*Kits Available in:*

- 4 Light Kit Pack
- 8 Light Kit Pack

Standard Kit Components



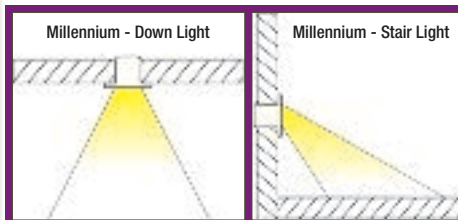
## MILLENNIUM RECESSED LIGHTING COLLECTION



*The Millennium Collection from DEKOR™ Takes Mood Lighting to a Whole New Dimension, with Small, yet Powerful Low Voltage L.E.D. Lights that Offer Function and Style!*

The Millennium Recessed Lighting Kit Includes:

- Eight Compact L.E.D. Lights in Powder Coated Covers
- Outdoor Rated Wire Nuts and Drill Bit
- Capable of Handling up to 20 Lights
- Easy Installation Instructions



Standard Kit Components



**Add-On LED Light Kits Available!**



# DEKOR™

*Welcome to the World's Most Innovative and Exclusive Line of Railing Products!*

Indoor or Outdoor, Day or Night,  
Create that Special Look, Feel and Ambience  
that You Call Your Own, Using **DEKOR™** Products.  
From the Basics to the World's First and Only Patented  
Illuminated Line of Balusters and Panels.

## PETITE LAMPS



### Simple Installation...

1. Drill a hole with our custom Forstner Bit
2. Mount the Petite Directional Light in any direction you want

*The Petite Lamp by DEKOR is Extremely Versatile!*

- Petite Directional Lamp Lights can be Rotated a Full 360 Degrees
- Optional Diffuser Discs Included for a Softer Light Effect

- Color Choices:  
Antique Metal Black, Oil Rubbed Bronze



INSTALLATION INSTRUCTIONS:  
<http://www.de-kor.com/installation-tools-accessories.html#bit>

## CASEY COLLAR LAMP

*Add a Classic Element to Your Lighting Design with the NEW Casey Collar!*



The Casey Collar Lamp incorporates a polycarbonate lens with warm white LED, housed in a cast aluminum body.

- Color Choices:  
Antique Metal Black,  
Oil Rubbed Bronze

## APOLLO LAMP

*The NEW Apollo Adds a Distinctive Contemporary Design!*



The Apollo Lamp incorporates a polycarbonate lens with warm white LED, housed in a cast aluminum body.

- Color Choices:  
Antique Metal Black,  
Oil Rubbed Bronze

## POST LAMPS



Tear Drop Post Lamp

*L.E.D. Lighting in an Easily Mounted Lamp for Deck or Fence Posts!*

These versatile lamps are available in two styles...

- Tear Drop
- Holly



Holly Post Lamp

## RADIANCE LED LIGHT

*Our NEW Radiance LED Step Light is a Sleek, Contemporary Design that will Safely Brighten all Your Indoor and Outdoor Stairs!*



- 30 Warm White LED's
- Cast Aluminum Housing
- Color Choices:  
Antique Metal Black, Oil Rubbed Bronze

## POST LIGHTS & CAPS



L.E.D. Post Cap Lights

*For Impact, it's Millennium Post Caps!*

Our post caps allow you to light one side, two sides, three or four to create just the right look and light for any occasion.

Combine lighted caps with standard post caps in sizes that fit most composite and wood posts.



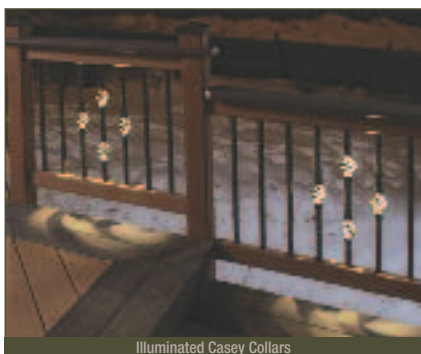
- Color Choices:  
Hammered Bronze, Oil Rubbed Bronze,  
Wrought Iron Texture, Dark Copper Vein

- Sizes: 3-9/16", 4-1/8",  
4-9/16", 5-1/8", 5-1/2"



Post Caps with Optional L.E.D. Lights

## BALUSTERS & PERFECT PANELS



Illuminated Casey Collars

***SIMPLY PERFECT... DEKOR™ Balusters and Rails are Made from the Highest Quality Materials Using Creative American Designs and Handmade Craftsmanship!***

### PERFECT PANELS...

Shown here in both illuminated and non-illuminated styles, give decks and porches a distinctive look that adds value and high style.

### BALUSTERS...

Used alone or in combination with baskets, accents or lights, our round and square balusters offer sleek design and solid craftsmanship. Baluster end caps provide a professional finish.

- Color Choices: Antique Metal Black, Oil Rubbed Bronze



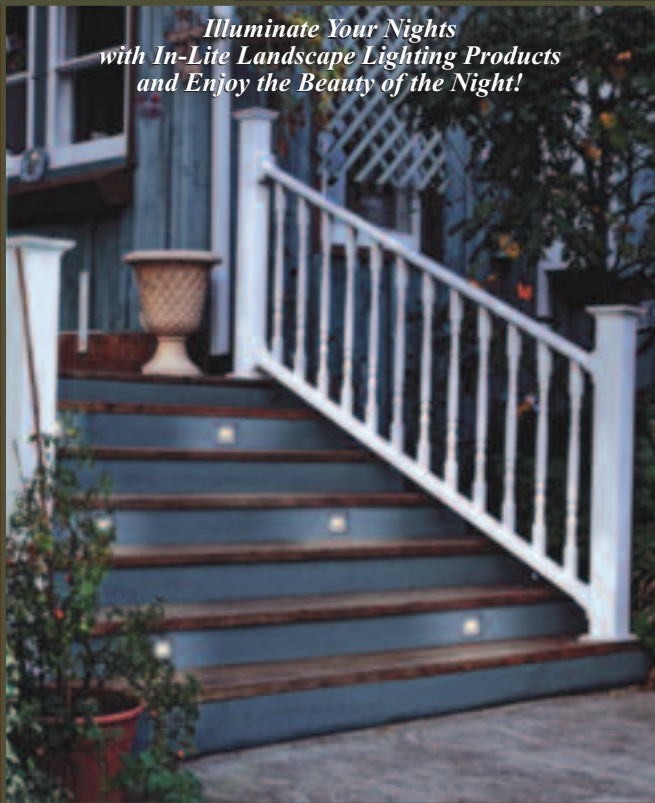
Perfect Panels with L.E.D. Lights



# in-lite

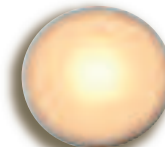
Let the Evening Come.  
Don't Retreat Indoors  
When Night Falls...

*Illuminate Your Nights  
with In-Lite Landscape Lighting Products  
and Enjoy the Beauty of the Night!*



*Great for Boat Docks!*

Choose from...  
• L.E.D. Technology • Halogen  
for Your Flush Mount Lighting Needs!



Traditional In-Lite



L.E.D.-Lite 7/8"



Micro Light 1-5/8"



Flush Mount L.E.D. Light 1-9/16"  
•Includes both Trim Rings!



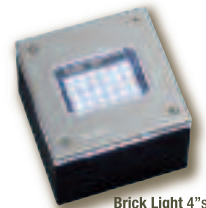
Floor Light 3-3/8"



Flush Mount L.E.D. Light 3-1/8"  
•Includes both Trim Rings!



Fish Eye L.E.D. Light 4-1/2"



Brick Light 4"sq.

## SOLAR POST LIGHTING

*Put the Crowning Touch  
on Your Projects with Stallion...*

- Gorgeous, Hand-Made Tiffany Glass Post Caps and Lighting
- Stylish and Sophisticated Post Caps
- Economic and Practical Lighting

### WEDGE LIGHTING...

- 3 L.E.D. Lights and 3 NiCad Batteries
- Surface Mount



- Sizes: 7"H x 3"W x 2-1/2"D
- Color Choices: White, Black



### SOLAR ACCENT LIGHTING...

- Made of Durable PVC Vinyl
- Includes Two NiCad Battery

- Color Choices: White, Tan, Black
  - Sizes: 3-1/2", 4", 5"
- (Not all color choices available in all sizes and styles.)*

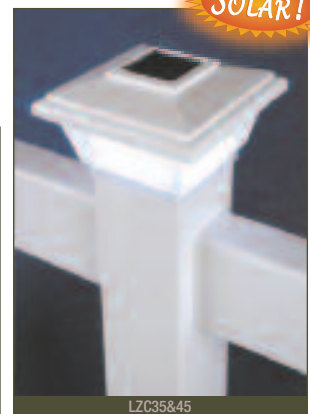


LZWC45



LZC55

SOLAR!



LZC35&45

• NOTE:  
Solar Panel Charges NiCad Battery During the Day.  
Battery is Designed to withstand a Minimum of 1,000 Deep Charges.  
It Emits a White Accent Light.

## WALKWAY LIGHTING

### EYE BALL LIGHTING...



- Color Choice: Antique Copper

### STEP RISER LIGHTING...

- Wiring Available In:  
7 Watt - 12 Volt



- Color Choice: Antique Copper



# Classy Caps

The Ultimate in Outdoor Accent Lighting  
Quality... Reliability... Innovative...

## Classy Caps Outdoor Accent Lighting Uses the Latest Technology!

Our Monocrystalline Solar Panel Absorbs More than 91% Optimum Solar Power Allowing up to 12 Hours of Light per night.

We also use High Output LED's for an Ultra Bright White Light.

### PRESTIGE SOLAR POST CAP LIGHTS

**SOLAR!**

#### Prestige Features...

- 3 High Output LED's with Our 5x5 and 6x6 Models
- 2 Long Life AA NiCad Rechargeable Batteries Included
- High Performance Solar Lights – Stays Lit for up to 12 Hours
- Lights Up Automatically Every Night with an Auto - On/Off Switch
- 2 High Output LED's with Our 4x4 Prestige for Brilliant White Light
- Available Colors: White PVC, Antique Electroplated Copper

**Our Solar Lights Incorporates a Quick Connect Socket to Make Installation Quick and Easy!**



|  |          |
|--|----------|
| <b>Our 4x4 Post Caps:</b>  |          |
| • SL079C   | • SL079W |
| will fit over an actual 4"x 4" PVC or nominal 4"x 4" wood post                     |          |
| • Includes: 3-1/2"x 3-1/2" adapter   |          |
| <b>Our 5x5 Post Caps:</b>  |          |
| • SL085  |          |
| will fit over an actual 5"x 5" PVC   |          |
| • Includes: 4-3/4"x 4-3/4" adapter   |          |
| <b>Our 6x6 Post Caps:</b>  |          |
| • SL086  |          |
| will fit over an actual nominal 6"x 6" wood post (actual dimension 5-5/8"x 5-5/8") |          |

### SOLAR DECK & WALL LIGHTS

#### Our High Performance Solar Deck and Wall Lights... Stays Lit for up to 12 Hours Long!

- Lights Up Automatically Every Night with an Auto - On/Off Switch
- 1 Long Life AA Ni-Mh Rechargeable Battery Included
- 2 High Output LED's for a Brilliant White Light

• Available Colors:  
Black or White in Powder Coated Aluminum, Electroplated Copper



## GAMASONIC Offers Beautifully Crafted, Energy-Efficient Solar Post Lamps that will Bring Years of Enjoyment!



### GAMASONIC's Many Features...

- Automatic Dawn to Dusk Operation
- 2.2 Watt Super Efficient Solar Panel
- Solid Powder-Coated Cast-Aluminum
- Patented Cone Bright Silver Reflector
- Super Bright White LED's = Cool Light 6000K
- Battery Duration 3-5 Years +



### BAYTOWN SOLAR POST LAMP



**Our BAYTOWN SOLAR POST LAMP...  
has a traditional coach light design!**

- 6 Bright White LED Bulbs

The available mounting is the octagon base which mounts to any flat surface.

Size: 20 1/4" High x 9" Wide

Available Colors: Black, Bronze

### VICTORIAN SOLAR POST LAMP

**Our VICTORIAN SOLAR POST LAMP...  
can be used for a multitude of applications!**

- 6 Bright White LED Bulbs
- LED Light output equivalent to a 40 watt incandescent bulb!*

Two Available Mountings:

- Round base to fit 3" post
- Octagon base mounts to any flat surface

Size: 13" High x 10" Wide Available Colors: Black & White  
Lamp with post or wall mount fixture available special order.



### ROYAL SOLAR POST LAMP



**Our ROYAL SOLAR POST LAMP...  
is intricately crafted to bring a royal-classic  
appeal to beautify your landscape!**

- 5 Bright White LED Bulbs

Two Available Mountings:

- Round base to fit 3" post
- Octagon base mounts to any flat surface

Lamp with post or wall mount fixture available special order.

Size: 20 1/4" High x 9" Wide Available Color: Bronze

### IMPERIAL SOLAR POST LAMP

**Our IMPERIAL SOLAR POST LAMP...  
has two switches, a high and low,  
to allow for optimal solar time usage!**

This lantern fits over any existing 3" pole.  
Using our patented cone reflector technology,  
this classic gas lamp design solar lantern  
has 8 super bright white LEDs.

Size: 16" High x 10 1/2" Wide

Available Color: Black





# BISON DECK SUPPORTS

**BISON™ LEVEL.IT® Adjustable Deck Supports**  
*are the Simple Solution to Your Decking Needs!*

Use on rooftops, balconies, over cracked concrete patios, even on-grade! Works with any surface material, from wood tiles, traditional stringer and plank decks, natural stone, composites or concrete.

With **LEVEL.IT®**, if You Can Dream it, You Can do it!

One simple **LEVEL.IT®** model LC covers heights from 2" to 4-3/4". Additional accessories are available to compensate for slope and accommodate heights from 1/8" up to 12". Model LC supports up to 750 lbs.

- Easy Ordering
- Easy Installation



### LEVEL.IT®

*Model LC Does it All!*

Adjust to job variations on the spot - just add or remove a coupler to reach the right elevation (reach up to 12" in height!)

- Model LC covers height ranges from 2" to 4<sup>3/4</sup>" adjustable.
- Use Model LO for adjustability from 1<sup>1/4</sup>" to 2" or fixed height pedestals for heights from 1/8" to 1<sup>1/4</sup>".

**BISON™ WOOD TILES** are Ideal for Blending the Beauty and Upscale Appearance of Real Wood with Long-Lasting Durability and Low Maintenance.

**BISON™ Wood Tiles** are constructed from select cut Brazilian Woods, which has been harvested in an environmentally responsible method designed to preserve and enhance the economic viability of rain forest hardwoods. Wood species offered include Massaranduba (*FSC Certified*) and Ipê, which are very hard woods, approximately three times harder than Red Oak.

### BISON™ Ipê Tiles:

- Fire Rating: Class B
- Color: Brown\*
- Janka Hardness Rating: 3,680 lbs.
- WT-IPE-24 Surface: Smooth
- Dimensions: 23-7/8" x 23-7/8" x 1.69"
- Weight: 22.5 lbs.
- Weight PSF: 5.63 lbs



## THE CAMO HIDDEN DECK FASTENING SYSTEM...

Works on any treated lumber, hardwood, cedar, composite or PVC deck board. CAMO Deck Screws and Marksman Tool combine to deliver a fastener-free deck surface at a price that makes getting the job easy and installing the deck even easier.

### IT'S CHANGING THE FACE OF DECKING!

CAMO HIDDEN FASTENERS were independently tested by Architectural Testing Inc. (ATI) and exceeded ASTM Uplift Resistance standards in all solid and grooved wood, composite, and PVC and boards tested. CAMO also exceeded ASTM Thermal Cycling standards in all solid wood, composite, and PVC and boards tested. The patented CAMO system includes proprietary deck screws, Marksman™ tools and CAMO Driver Bits. The uniquely designed screws and a Marksman tool enable a distinctive side-angle entry that secures solid or grooved deck boards directly to a deck joist reducing board movement and allowing the screws to be hidden. No pre-drilling is required, and the screws back out easily in the event a board needs to be replaced.



*Home Improvement Executive's 2011 Innovation Award...  
Hidden Deck Fastening Systems Category!*

### Available Screw Finishes:

- ProTech Coated
- Stainless Steel

### Screw Length Sizes:

- 1-7/8"
- 2-3/8"

### Packaged Count:

100, 350, 700, 1750





## The Ipe Clip

### Extreme™ Hidden Deck Fastener System



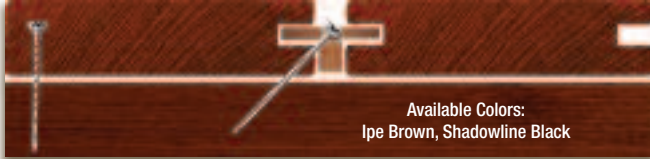
Features a Quick & Easy Installation Process, Because Ipe Clip® Automatically Sets a 3/32" Gap Spacing Between the Installed Deck Boards.

**COMPONENTS...**

- 175 Ipe Clip Extreme™ Hidden Deck Fasteners
- 190 Stainless Steel T10 Star Drive Screws
- 12 Tapered 3/8" Ipe Plugs
- 1 High Speed 1/8" Drill Bit
- 1 Screw Gun Driver Bit

**COVERAGE...** • 175 SF Using 5-1/2" Boards with 24" Joist Spacing • 100 SF Using 5-1/2" Boards with 16" Joist Spacing

Use with hardwoods and most composite decking that require a 3/32" gap.



Available Colors:  
Ipe Brown, Shadowline Black

Stainless steel insert increases holding power which makes a nearly unbreakable fastener.

No gap space measuring is needed when you choose **Ipe Clip® Hidden Deck Fastening Systems!**

Available Colors: Ipe Brown, Shadowline Black

## The Ipe Decking Plugs™

*IPE Wood Plugs are Straight Sided Wood Plugs That Fit 3/8" Holes in IPE Wood Decks and Other Projects!*

IPE Plugs are straight sided easy installation. These are face grain - side grain to repel water.

- 3/8" Diameter
- 1° Taper
- Approx. 3/8" Long

ALL our 3/8" plugs are made from quality hardwoods!



## The Ipe Hardwood Wrench™

*Cam Locks in Place for True Hands Free "One Man" Operation!*

- Capable of Bending Multiple Boards Simultaneously
- Adjusts to Various Sized Joist Thicknesses
- High Quality Anodized Aircraft Grade Aluminum with Hardwood Handle
- Works with ALL Decking Materials
- Easily Reversible Handle with NO EXTRA TOOLS NEEDED!



# BoWrench®

It's a One Man, Self-Locking, Board Bending, Tongue & Groove Joining Tool!

- Basic Tool Binds Itself to Any 2"x 1-1/2"
- Frees Up Hands and Legs
- Bends Multiple Boards
- Closes Gap up to 2-1/4" +
- Left or Right-Handed
- Seconds to Operate
- Powder Coated Heavy Duty Steel Construction
- Accessories Available
- Custom Size Grippers or Adjustable Grippers Available from Factory



## The EZ Stair System Offers Many Beneficial Attributes!

- It is adjustable, heavy duty steel stair bracket system, which allows you to make automatic adjustments to form any rise, or run you require.
- The brackets provide "code compliant" rail post support for any type of wood stair, which meets the code requirement for 200 lb. lateral load at 42".
- EZ Stairs adjustable stair brackets exceed IBC lateral load specified code requirements with minimal deflection.

**EZ Stair System Kits Available In...**

- Single Step Kits
- 16 Pack = 8 Step Kits



• EZ Stairs will support 500 lbs.!

## FastenMaster LedgerLok

Using a low RPM/high torque drill, the Ledgerlok will drive right through a deck ledger board and then secure to rim joist of house.

- **No Pre-Drilling!**

**FREE 5/16" Driver Bit in Every Package!**



## Sandell's Flash Guard™

Here is a copper flashing product made with non-asphalt adhesive, and featuring a revolutionary polypropylene backing.

This next-generation flashing is specifically designed for pressure-treated decks, and can also be used as a foundation flashing or door and window flashing.

It has superior tear and puncture resistance, along with a high de-lamination threshold.

It will not stain, unlike Kraft paper-backed flashings.

**Available Sizes:**

- 2oz. or 3 oz. Copper
- 8", 10" or 12" Widths
- 20' or 60' Rolls



Custom Sizing Available!

★ ★ THE ★ ★  
**NANTUCKET**  
**POST CAP**

*Our Arbors and Pergolas are Designed to Last!*

*More Beautiful Designs Available at...*  
 WWW.NANTUCKETPOSTCAP.COM

All Arbors and Pergola's Tops, Arches and Single Halo Arches Can be Purchased Separately!

**PERGOLA TOP**

- Includes:**
- 2 Bases, 5 Rails and Cross Pieces
  - Top Sizes: 3', 3-1/2', 4', 5', 6'
- NOTE: Not all sizes available, depending on pergola selection.*



**SINGLE HALO ARCH**

- Includes:**
- 1 Red Cedar Arbor Arch
  - Sizes: 3', 3-1/2', 4', 5', 6', 8'
- NOTE: Not all sizes available, depending on arbor selection.*



**ARBOR ARCH**

- Includes:**
- 2 Red Cedar Arches
  - 4 Slip Over Post Caps
  - Doweled Connecting Spindles
  - Sizes: 3', 3-1/2', 4', 5', 6', 8'
- NOTE: Not all sizes available, depending on arbor selection.*



**SEASIDE PERGOLA**

- Includes:**
- Easy-to-Assemble Cedar Pergola Top
  - Cedar Single Halo Arch
  - 4 - 8' Red Cedar Posts
  - 2 Slip Over Post Caps
- Sizes:**  
 3', 3-1/2', 4', 5' or 6'  
*(Surfside gate sold separately.)*



**BEACHSIDE ARBOR**

- Includes:**
- 2 Cedar Elliptical Arches
  - Doweled Connecting Spindles
  - 4 Red Cedar Posts
  - 4 Pre-Drilled Post Caps
  - 2 Square Lattice Panels
  - Sizes: 4', 5', 6'



**NANTUCKET ARBOR**

- Includes:**
- 2 - 3-1/2'x 3-1/2' Red Cedar Arches
  - 22" Red Cedar Doweled Connected Spindles
  - 4 - 8' Red Cedar Posts
  - 4 Slip Over Post Caps
  - 21-1/2" x 47-1/2" Square or Diagonal Lattice



**BRANT POINT ARBOR**

- Includes:**
- 2 - 4-1/2'x 4-1/2' Red Cedar Arches
  - 30" Red Cedar Doweled Connected Spindles
  - 4 - 8' Red Cedar Posts
  - 4 Slip Over Post Caps
  - 29-1/4" x 55-1/2" Square Only Lattice



**NOBADEER ARBOR**

- Includes:**
- 2 - 3-1/2'x 3-1/2' Red Cedar Arches
  - Red Cedar Doweled Connected Spindles
  - 4 Arbor Cross Arm Braces
  - 2 - 8' Red Cedar Posts
  - 2 Slip Over Post Caps
- (Surfside gate sold separately.)*



**HIGH TIDE GATE**

- Includes:**
- 4', 5' or 6' Widths
  - Opens in Middle
  - Pool Gates Available
  - Custom Sizes



**SURFSIDE GATE**

- Includes:**
- 3' Solid Gate
  - 4', 5' or 6' Opens in the Middle
  - Pool Gates Available
  - Custom Sizes



**COUNTRY ESTATE GATE**

- Includes:**
- 3' Solid Gate
  - Pool Gates Available
  - 3-1/2', 4', 5' or 6' Opens in the Middle



**SOUTH SHORE GATE**

- Includes:**
- 3-1/2', 4', 5' or 6' Widths
  - Hardware Included
  - Custom Sizes



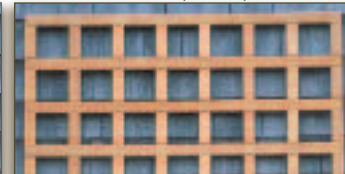
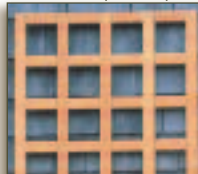
**TRELLIS PANELS**

• Made from Clear Western Red Cedar

3-Pane (17-1/2" x 71")

4-Pane (23" x 71")

7-Pane (39" x 71")



**FLUTED POST SLEEVE**



**POST SKIRT**

• Any Size from 3-1/2" to 10"  
 Assembled or unassembled.



**BOTTOM POST DRESSINGS**





★ ★ THE ★ ★  
**NANTUCKET**  
**POST CAP**

*We have a Large Selection of Post Caps and Finial Designs with Sizes to Meet Most Requirements!*

Our Caps and Finials are Available in Redwood and Western Red Cedar.

If You Don't See the Size You Need, Please Call Us.

We can Generally Make Any Size, and with Any Species of Wood.

**BAR HARBOR SOLAR LIGHT**

*The Bar Harbor Solar Light Provides the Perfect Accent to Your Post, While Providing a Soft Glow to See Your Way Through the Night!*

- Each Solar Cap is Fitted with Four Long-Life, Bright L.E.D.'s
- Non-Lighted, Matching Caps Available in the "Island" Style Vertical-Grain Cedar and Redwood!
- Available in Redwood and Clear Western Red Cedar, for Any Post Size 3-1/2" up to Full 6"
- 2 NiCad Batteries Included

*The Bar Harbor's Powerful Solar Cell Lasts Through the Night, up to 12 Hours Long!*



*Be the First to Own...  
**Worlds First,  
 Solar-Powered  
 Wooden Post Cap!***

**SOLAR!**

**PROSPECT HARBOR LED LOW VOLT LIGHT**

*The Prospect Harbor Low Voltage LED Light Provides Great Accent Lighting to Your Posts!*

These high output LED's accent down the sides of the posts and light up the area surrounding the posts!

**Order Our Pre-Packaged Wiring Kits, Which Include:**

- 100' of Low Voltage Wire
- Optional Remote Control & Remote Driver Box
- 1 Transformer, which will Light up to 2, 7, or 12 Lights



*Add These  
**One of a Kind  
 Wooden LED  
 Lighted Caps**  
 to Entrances,  
 or Light up  
 Your Entire  
 Deck and Fence!*



**IPE FEDERAL POST CAP**

*Our High Quality IPE Federal Post Cap Provide Years of Protection to Your Posts!*

- Available Sizes: 3-1/2" up to 10"
- Made of IPE Wood

*NOTE: IPE wood must be sealed inside and out prior to installation.*

*Our Post Caps are Hand Crafted One Post Cap at a Time, in Our Randolph, Vermont Factory!*



*Also, Available in... Island Post Cap Design!  
 CUSTOM SIZES AVAILABLE, CALL FOR A QUOTE!*

**IPE PREASSEMBLED RAILING**

- Available Sizes: 6' & 8' Straight Rail and 6' Stair Railing



★ ★ THE ★ ★  
**NANTUCKET**  
**POST CAP**

*We have a Large Selection of Post Caps and Finial Designs with Sizes to Meet Most Requirements!*

Our Caps and Finials are Available in Redwood and Western Red Cedar.

If You Don't See the Size You Need, Please Call Us.



We can Generally Make Any Size, and with Any Species of Wood.

**METAL POST CAPS**




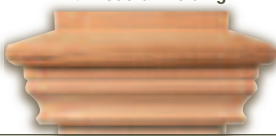





**NON-SLIP OVER POST CAPS**

Our "REAL" Copper Top will Turn to a Rich Patina Finish Over Time!  
 Available Sizes: 3-1/2" up to 10"

Our Non-Slip Caps are Crafted Utilizing a One Piece Construction!  
 Available Sizes: 3-1/2" up to 6-1/2"

|  |   |   |  |   |   |
|--|---|---|--|---|---|
| <b>CAMBRIDGE</b><br>with Federal Molding   | <b>EAST CREEK</b><br>with Island Molding  | <b>WEST CREEK</b><br>with Federal Molding   | <b>MARTHA'S VINEYARD</b>   | <b>NANTUCKET</b>  | <b>SOUTH HAMPTON</b>  |
|  |  |  |  |  |  |

**SLIP OVER POST CAPS**

|  |   |   |  |   |
|--|---|---|--|---|
| <b>BACK STREET</b><br>with Back Street Molding                                   | <b>BEACHWALK</b><br>with Island Molding   | <b>Actual Post Size:</b><br>3-1/2" x 3-1/2"    5-3/4" x 5-3/4"<br>3-3/4" x 3-3/4"    6" x 6"<br>3-1/2" x 5-1/2"    6-1/2" x 6-1/2"<br>4" x 4"                7" x 7"<br>4-1/2" x 4-1/2"    7-1/2" x 7-1/2"<br>4-3/4" x 4-3/4"    8" x 8"<br>4" x 6"                8-1/2" x 8-1/2"<br>5" x 5"                9" x 9"<br>5-1/2" x 5-1/2"    9-1/2" x 9-1/2"<br><i>Wow Up To...</i> 10" x 10" | <b>FEDERAL</b><br>with Federal Molding   | <b>GREAT POINT</b><br>with Federal Molding  |
|  |  |   |  |  |
| <b>HARBOR</b><br>with Island Molding   | <b>ISLAND</b><br>with Island Molding  | <b>MONTEREY</b><br>with Island Molding  | <b>NEWPORT</b><br>with Island Molding  | <b>SEABREEZE</b><br>with Federal Molding  |
|  |  |    |  |  |











**AZEK POST CAPS**

**MAHOGANY POST CAP**

|   |   |  |   |  |
|---|---|--|---|--|
|    | <b>Unbeatable 25 Year Warranty on Material Defects!</b>                             |    | <b>Made From Kiln Dried African Mahogany!</b>   |  |
| <b>AZEK Federal Post Cap</b>  |   | <b>AZEK Island Post Cap</b>  |   | <b>Mahogany Island Post Cap</b>  |
| <ul style="list-style-type: none"> <li>• Impervious to Insects and Moisture</li> <li>• Will Not Rot, Split, Warp or Twist</li> <li>• Looks &amp; Feels Like White Painted Wood</li> </ul> |  | <ul style="list-style-type: none"> <li>• Accepts Paint Easily for a Custom Color</li> <li>• Available Sizes: 3-1/2" up to 8"</li> <li>Note: Not all sizes available in Ball Finial Post Cap</li> </ul> |  | Available Sizes: 3-1/2" up to 10"  |
|   | <b>AZEK Ball Finial Post Cap</b>  |  | <b>Mahogany Island Post Cap</b>   |  |

**NANTUCKET FINIALS**

**BOSTON TURNING WORKS FINIALS**

|  |   |   |   |   |   |  |   |   |   |
|--|---|---|---|---|---|--|---|---|---|
| Available Sizes: 4", 5", 6", 8"  |   |   |   |   | Available Sizes: 4", 5", 6", 8"   |  |   |   |   |
|  |  |  |  |  |  |  |  |  |  |
| Acorn  | Ball  | Cobblestone   | Eel Point   | Quaise  | F101  | F102   | F103  | F104  | F106  |

**POST FINIALS**

|  |   |   |   |   |   |   |
|--|---|---|---|---|---|---|
|  |  |  | <p>A Number of Factors Contribute to the Quality of a Post Top, From the Selection of the Raw Materials to the Fine Hand Craftsmanship Found in Every HomeTops Post Cap, which Makes Our Post Caps...<br/> <i>Made the Old Fashion Way!</i></p> <ul style="list-style-type: none"> <li>• We Use <b>ONLY THE BEST</b> Western Red Cedar in Our Finials</li> </ul> <p><b>We Will CUSTOM MAKE Any Cap!</b></p> |  |  |  |
| <b>XL Classic</b>  | <b>XL Colonial</b>  | <b>Jumbo Colonial</b>   |   | <b>Orthodox</b>   | <b>French Gothic</b>  | <b>French Acorn</b>   |



# FORTRESS

## BALUSTER SYSTEMS

*Decorative Iron Baluster Systems  
Combine Steadfast Strength and Durability!*

FORTRESS Iron Products will Eliminate  
All Maintenance Concerns with  
Our Specialized Dual Galvanizing System  
and Exterior Powder Coat Finish.

*FORTRESS Iron  
Pre-fabricated Deck  
and Balcony Panels  
Provide an Easy,  
Cost Effective Way  
to Construct Railing  
that will be Virtually  
Maintenance FREE!*

Built for 8 foot on-centers,  
these rail panels will give you  
the attractive iron accent  
you are looking for and the strength  
and durability you need  
in a rail system.

- 100% Galvanized Inside and Out
- Powder Coated Finish
- Zinc Coated Smooth Welds



# Ultra-tec

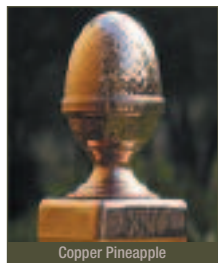
*Let the Beauty  
of Nature be Seen  
and Not Covered Up  
by Traditional  
Railings Systems!*

- Easy to Install
- Add Value to Your Property
- Comes with All Necessary Hardware
- Maintenance Free 316 Stainless Steel
- Stainless Steel Railing Systems is Affordable
- Patented Push-Lock™ Fitting Simplifies Installation



# METAL & TEAK POST CAPS

## NATIONWIDE POST CAP



Copper Pineapple



Copper Ball



Stainless Pyramid



Copper Pyramid

*Pyramid Caps Now Available in 4"x 6"!*

## ROUND COPPER POST CAP

*Great for Log Homes and Pier Pilings!*

- Available on the 1/4" from 3" up to 15"

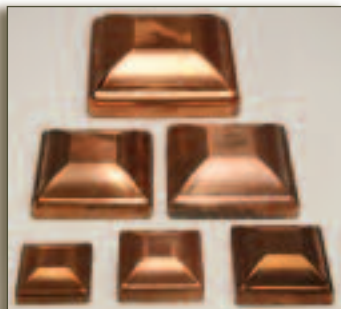


Sedona



Tiara

## COVERALL POST CAP

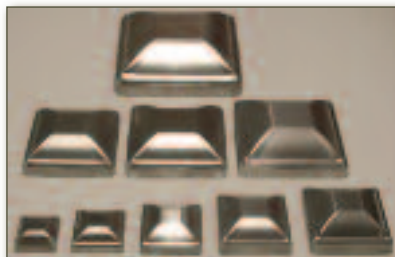


**COVERALL Offers...**

- 13 Available Sizes: 1-1/2" to 8"

**WOW!**

- .040 Gauge, Heavy-Duty Metal Press-On Caps
- Metal Choices: Copper, Aluminum (*Galvanized Not Shown.*)



## POST POINT CAP

3 Available Metals in Following Sizes:

- Solid Copper Sizes: 3-1/2", 3-1/2"x 5-1/2", 5-1/2", 6-3/4", 8", 9-1/2", 11-1/2"
- Black & Bronze Sizes: 3-1/2", 5-1/2", 6-3/4", 8" • Stainless Size: 5-1/2"



**MAINE ORNAMENTAL...**  
*Accessories that Set the Standard for Dressing Up Your Outdoor Project!*



## TRADITIONAL POST SKIRT

*Enhance Your Deck Post with the Traditional Post Skirt!*

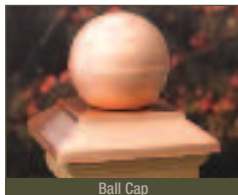
- Available Sizes: 3-1/2", 5-1/2"



Traditional Post Skirt

## VICTORIA POST CAP SERIES

- Color Choices: White, Black, Green, Copper, Brass, Pewter, Stainless



Ball Cap



High Point Cap



High Plateau Cap

## NEWPORT POST CAP SERIES

- Wood Choices: Western Red Cedar, Redwood, Pressure Treated



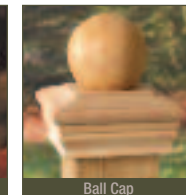
Copper High Top Cap



Classic Cap



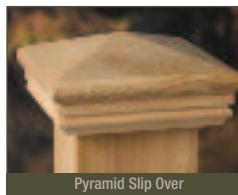
High Pyramid Cap



Ball Cap

## HATTERAS POST CAP

- Wood Choices: Western Red Cedar, Redwood, Pressure Treated



Pyramid Slip Over



Flat Top Slip Over



Casco Flat Over

## COLONIAL POST CAP

**"NEW" Builder Series Cedar Caps Now Available!**

- Sizes: 3-5/8", 4-1/8", 4-5/8", 4-7/8", 5-3/16", 5-5/8"



Flat Top



Pyramid

## JUMBO VICTORIA

- Available Sizes: 8"x 8", 10"x 10", 12"x 12"



High Point

## MARANACOOK POST CAP SERIES

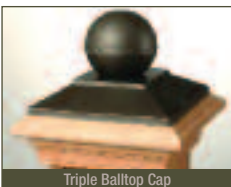
**A Unique Metal Post Cap Line with an Enhanced Wood Moulding Design!**

- Sizes: 5-1/2"x 5-1/2", 6"x 6" (*NOTE: The 6" post cap fits posts measuring 6"x 6".*)

- Color Choices: Brushed Stainless, Pewter, Real Patina, White (*Not all color choices available in all sizes and styles.*)



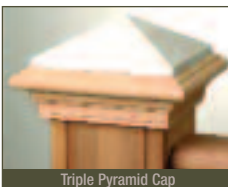
Triple Balltop Cap



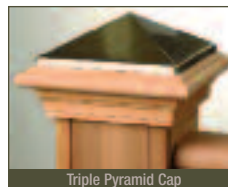
Triple Balltop Cap



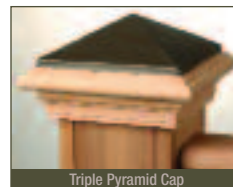
Triple Pyramid Cap



Triple Pyramid Cap



Triple Pyramid Cap



Triple Pyramid Cap

# DecKorators™

Add a Unique, Yet Practical Touch to Your Outdoor Project with DecKorators Lighting & Accessories by Maine Ornamental!

## POST LIGHTS

- Color Choices: White, Black



Solar White Post Light

## SOLAR ACCENT LIGHT

- Real Glass Lens
- Brilliant L.E.D. Light
- NiCad Batteries Included



Solar Black Post Cap

- Fits 3-1/2" Post Size
- Cedar or Treated Skirt
- Color Choices: Pewter, Black, Stainless



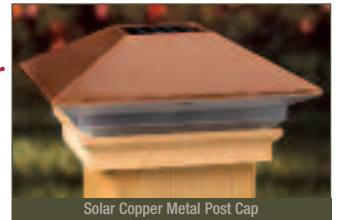
Solar Pewter Post Cap

SOLAR!

## SOLAR COPPER LIGHT

High Point Distinction in a Copper Solar Post Cap!

- NiCad Battery Included
- Fits 3-1/2" Post Size



Solar Copper Metal Post Cap

SOLAR!

## DESIGNER SOLAR POST CAP LIGHTS

Our NEW DESIGNER Solar Post Lights will Bring a Uniquely Captivating Look to Outdoor Living Environment!



Leaf Designer Post Light



Labyrinth Designer Post Light



Leaf Designer Post Cap Light



Labyrinth Designer Post Cap Light

## SPECIALTY POST CAPS

- Metal Choices: Real Copper, Black

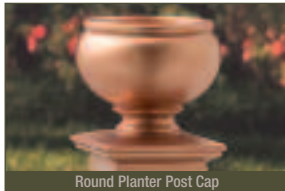
## CONVERTIBLE CANDLE SOLAR LIGHTS

These Candle Solar Lights Add an Art-Deco Flair to Your Deck!

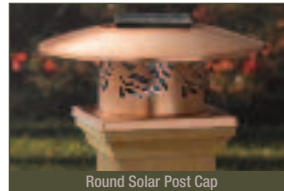
SOLAR!



Square Planter Post Cap



Round Planter Post Cap



Round Solar Post Cap



Pentwater Solar Post Cap



Dynasty Solar Post Cap

SOLAR!

## TIFFANY & ORNAMENTAL SOLAR LIGHTS

Bring Amazing Color to Your Nights with our Tiffany Solar Lights!

- Available for 3-1/2" & 5-1/2" Posts



Northwoods Solar Light



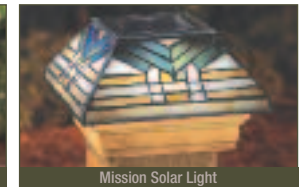
Jade Solar Light



Sunflower Solar Light



California Grape Solar Light



Mission Solar Light

## TIFFANY & ORNAMENTAL GLASS POST CAPS

Beautify Your Property with Real Tiffany Glass Post Caps!

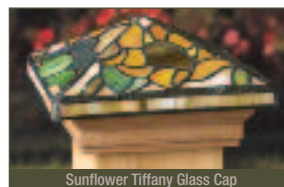
- Available for 3-1/2" & 5-1/2" Posts



Garnet Red Tiffany Glass Cap



Serpentine Jade Tiffany Glass Cap



Sunflower Tiffany Glass Cap



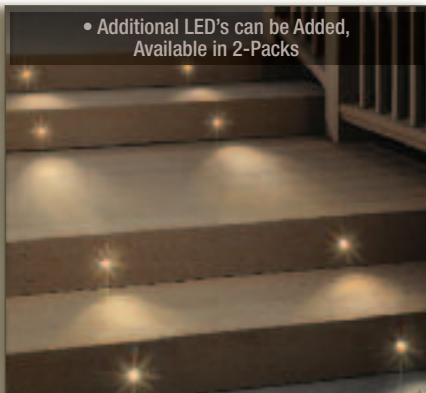
California Grape Tiffany Glass Cap



Mission Tiffany Glass Cap

## RECESSED LIGHTING SERIES

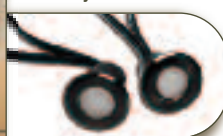
- Additional LED's can be Added, Available in 2-Packs



Our NEW DecKorators' Recessed, Low-Voltage Lighting Kits Provides a Brilliant Glow for Walkways and Steps, or Wherever Better Visibility is Desired!

Compact LED lights provide the perfect ambient lighting for decks, docks, porches and patios with a clean, streamlined appearance.

Each kit includes eight easy-to-install lights and the necessary installation hardware.



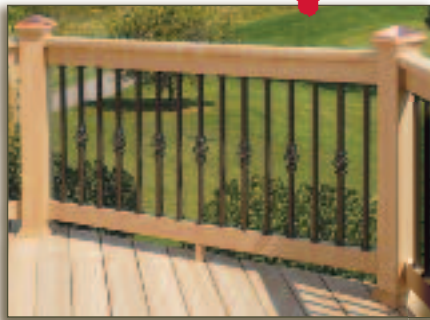
Perfect for Illuminating Stairs, Entryways or Other Points of Interest on the Deck!



# Dec ~~X~~orators™

*Deck Railings are what Distinguish One Deck from Another and Decorators Deck Balusters Give You Freedom to Create Distinctive and Unique Deck Rails!*

## ESTATE BALUSTER SERIES



**Estate Aluminum Balusters Put a Modern Touch on Most Any Deck's Appearance!**

The 3/4" square Estate baluster is available 26" and 32" tall for a 36" to 42" rail height.

Railings built with the Estate baluster can be stylishly customized by integrating a unique basket or collar accessory.

- Color Choices: Black, Bronze, White

Dou Connector



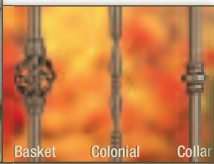
## ROUND BALUSTER



**Introduce a Rich and Elegant Feel to Your Deck Rail with the Placement of Designer Baskets and Collars!**

Mix or match to the colors of your balusters and create a distinctive and beautiful rail.

- Lifetime Limited Warranty



Basket Colonial Collar



- Rust Free Aluminum

## COLONIAL BALUSTER

**The Rich Look Provides a Distinguished Appearance Not Found When Using 2 x 2 Balusters!**

Colonial balusters easily install to wood or composite railings using Decorators' baluster connectors.

The Colonial is a 26" baluster for a 36" rail height.

- Color Choices: Black



## ARC BALUSTER



**The Appearance of Hand-Forged Wrought Iron!**

- Size: 1" Wide x 32-1/4" High

- Color Choices: Black, Bronze



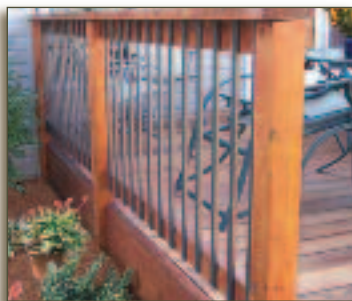
**Creating a Distinctive Rail Design!**

- Size: 1" Wide x 32-1/4" or 40" High

- Color Choices: Black, Bronze, White



## TRADITIONAL BALUSTER



**Traditional Balusters Provides the Straight Line Design without the Maintenance!**

Balusters can be installed on either wood or composite railings and are designed for 36" railings.

- Size: 1" Wide x 1/2" Thick x 32" Tall
- Color Choices: Black, Bronze

## SCENIC BALUSTER

**The Scenic Series Offers a Clear View of the Outdoors without Interruption or Maintenance, but with Distinction!**

Tested to withstand 350lbs. of pressure. The balusters are angled to work on stair rails.

- Size: 4" Wide x 5/16" Thick x 32-1/4" Tall
- Color Choices: Clear, Autumn



Frontier Balusters

## BALUSTER & RAIL CONNECTORS



Designer Connectors



Designer Stair Connectors



Traditional Connectors



Angle Connectors



Rail Connectors



Scenic Connectors

# Dec ~~X~~orators™

*Deck Railings are what Distinguish One Deck from Another and Decorators Deck Balusters Give You Freedom to Create Distinctive and Unique Deck Rails!*

## CXT RAILING SYSTEMS

**NEW!**



### CXT Railing is Co-Extruded From Two Layers of Materials, Making This One Beautiful and Tough Railing System!

The core is made with Strandex®, the most tested and trusted composite technology, while the outer cap stock layer gives CXT Railing the look of painted wood and CXT makes it ultra scratch and weather resistant.



Colonial

CXT Railing is Available in Two Profiles:  
 • Contemporary • Colonial

Three classic colors, two heights (36" and 42") and two section lengths (6' and 8').

Rails are pre-drilled for proper baluster spacing and ease of installation.



Contemporary

The extensive line of Decorators components can be combined with the CXT Railing line, allowing tremendous flexibility to design deck rails that look exactly the way you like and perform just as beautifully for decades.

Choose From a Wide Range of Baluster Styles:

- Glass
- Aluminum
- Co-Extruded Composite

Use Decorators baluster accessories including baskets, collars and centerpieces to add even more flair.



The unique "U-Bracket" design provides a fastener-free look and makes installation easy, especially on stair rail applications. Pre-drilled rails increase the speed of installation by taking the guesswork out of baluster spacing.

Decorators CXT Railing  
 Not Available in the Following States:  
 NC, VA, MD, DE, PA, CT, MA,  
 NJ, NY, ME, NH, VT, RI



**Decorators CXT Railing Boasts a 20 Year Limited Warranty!**

## RAILING SYSTEM SERIES

*Our Aluminum Railing System Series is Sleek...  
the Durable Top Profile Creates an Eye-Catching Appearance!*

The Railing System Series is Compatible  
with the Entire DecKorators Balusters Line!

The rail, post sleeve and cap rail are sold in kits to make purchasing straightforward.  
Stair rail bracket kits, angled rails and matching post caps are also available.

Full 4" x 4" posts slide over treated 4x4s for a system  
that's ideal for remodels and new projects.  
Designed for 6' and 8' on-center rail applications,  
and available in 36" and 42" rail heights.

- Available in a Durable Powder-Coated Black or White Finish



Square Copper Solar Light

Square Solarband Light

Solar Post Cap Light

Copper Pyramid

White Pyramid

Sunflower  
Tiffany-Style Pyramid

Mission  
Tiffany-Style Pyramid

California Grape  
Tiffany-Style Pyramid

## DECORATIVE POST COVER SERIES

*Enhance the Beauty of Your Outdoor Living Environments  
with an All-New Decorative Postcover Innovation!*

The High Density Polyurethane Covers Realistically Simulate the Look  
of a Dry Stacked Stone Post at a Fraction of the Cost of Real Stone!

Postcovers are made to easily slip over  
a treated 4" x 4" and 6" x 6" post.

*Matching Post Caps  
are Available!*

- Post Caps Sold Separately

*Designed  
to be Stackable!*  
• Adjustments are Simple  
Using Shims



Beige Curved  
Cap

Gray Flat Cap



Gray Fieldstone

Beige Stacked Copper

Gray Cobblestone