

Innovative  
**Fence and Railing Hardware**

For Vinyl, Metal and Wood Systems

Hinges  
Latches  
Handles  
Post Mounts  
Chain Link Accessories  
and more...



Nationwide Industries has over 2 decades of experience producing reliable, cost-effective, quality hardware.

Our innovative hardware products speak for themselves. Whether you need to meet pool codes, have any type of residential application, or a commercial job, Nationwide Industries has the unique and durable hardware to meet your needs.



## Stainless Steel Key Locking Drop Rods

**NW38305KL**

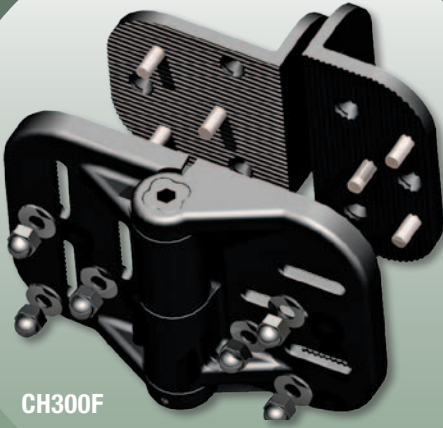
- » Add the appeal of a key lock to your drop rod
- » Comfortable easy to use handle
- » Designed with multiple “set” points for desired height when in the “up” position
- » Anti-theft protection
- » The handle & brackets are made of low-maintenance, glass filled nylon
- » The rods are 300 series stainless steel
- » Available in heights of 18", 24", 36" & 48"
- » Available with Black or White brackets
- » 2-sided bracket attachment
- » Stainless steel screws included



## Table of Contents

<b>CornerStone®</b> Self-Closing Nylon Hinges	Pages 2-5
<b>Rustic Series</b> Hinges and Latches	Page 6
<b>Stainless Steel</b> Hinges and Latches	Page 7
<b>KeyStone®</b> Latches, Round Post Adapter	Pages 8-10
<b>OrnaMAG™</b> Magnetic Metal Gate Latches	Page 11
<b>Manta™</b> Magnetic Latch	Page 12
Nylon Hinge and Pool Latch for Chain Link	Page 13
<b>AquaLatch™</b> Magnetic Gate Safety Lock	Page 14
Handles, Flip Latch, Copper & Hammered Brass Hardware	Page 15
Gate Braces	Page 16
Vinyl Railing Post Mounts	Page 17
Gate Wheels	Page 18

The  
**MILLION  
CYCLE\***  
Hinges!



CH300F

## For Vinyl, Metal, Wood and Chain Link Gates\*\*

The durability of glass-filled nylon along with high quality manufacturing and design, make the Cornerstone® an ideal choice when you are searching for a very strong, easy-to-install and cost-effective self-closing hinge. With a variety of options available, you will be assured that you have the right hardware for the right application.

- » Heavy Duty Commercial Grade
- » Glass-filled nylon construction for superior strength, durability and low maintenance
- » No rusting or staining

**Available in Black or White**

\* Cornerstone® springs tested to 1 million weighted cycles on a 6' x 4' privacy gate

\*\* See Page 13 for Round Post Products

**PATENTED**

## You Choose the Screws

- » Self-threading stainless screws for vinyl applications without stiffeners  
or
- » Self-drilling stainless screws for applications that use stiffeners

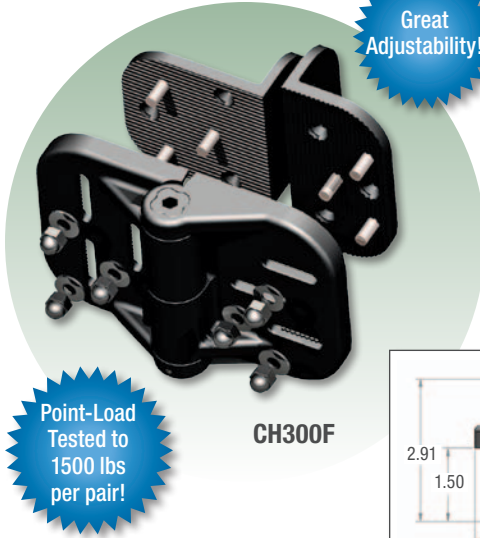


Easy and  
Convenient!

## Easy Tension Adjustment

- » Just push down and turn. A one-step process that is quick and avoids stripping. Allen wrench included.

## CornerStone® Fully Adjustable Hinge for Vinyl and Wood Gates

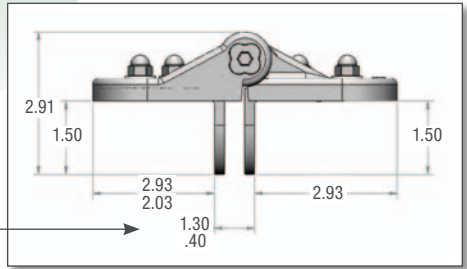


Great Adjustability!

Point-Load Tested to 1500 lbs per pair!

CH300F

- » Horizontally adjustable up to 7/8"
- » Vertically adjustable up to 1"
- » Fits both right and left hand applications



Double dimensions indicate range of adjustability

## CornerStone® Fully Adjustable Hinge for Vinyl and Ornamental Gates

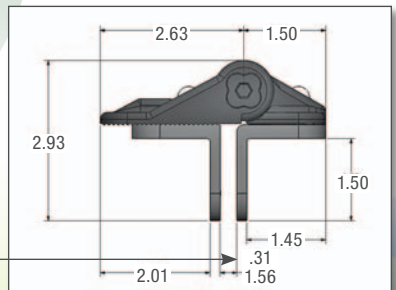


Great Adjustability!

Point-Load Tested to 1000 lbs per pair!

CH200F

- » Horizontally adjustable up to 1 1/4"
- » Vertically adjustable up to 1"
- » Fits both right and left hand applications



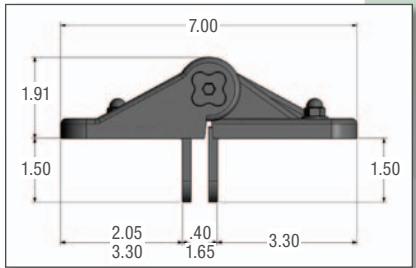
Double dimensions indicate range of adjustability

**Ideal for Narrow Gate Frames  
Fits Square Profiles**

### CornerStone® Fully Adjustable Hinge for Vinyl and Wood Gates

- » Excellent horizontal and vertical adjustability
- » Same patented Cornerstone tension adjustment
- » Nationwide's V-notch™ styling

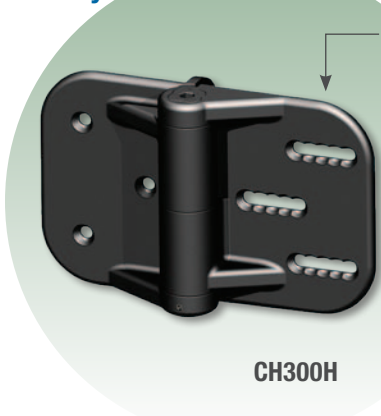
Closing Power rated at 150 lbs per pair



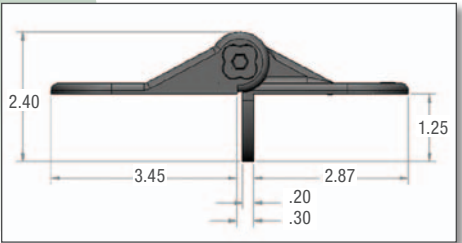
CH350F

### CornerStone® Horizontally Adjustable Hinge for Vinyl and Wood Gates

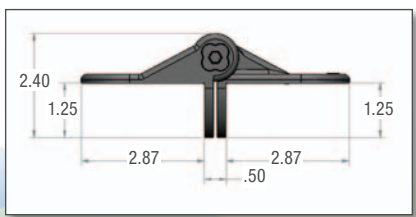
Slotted, serrated holes for horizontal holding power



CH300H



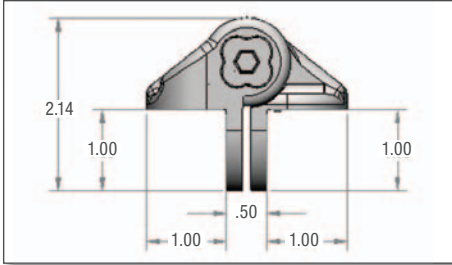
### CornerStone® Fixed Position Hinge for Vinyl and Wood Gates



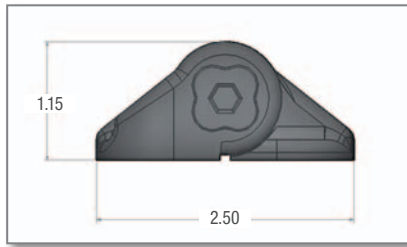
CH300N

## CornerStone® Fixed Position Hinge for Metal Gates

- » Includes stainless steel or zinc plated steel self-drilling screws

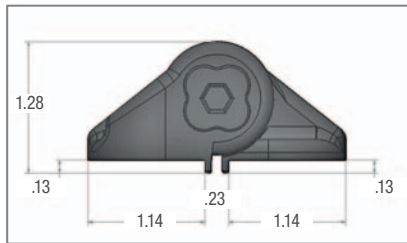


## CornerStone® Vertically Adjustable Hinge



**CH101V-SD-BK** Black  
**CH101V-SD-WH** White

- » Slotted for vertical adjustability
- » Includes stainless steel or zinc plated steel self-drilling screws



**CH102V-SD-BK** Black  
**CH102V-SD-WH** White

- » Slotted for vertical adjustability
- » Includes tabs for alignment
- » Includes stainless steel or zinc plated steel self-drilling screws

# Nationwide Industries Rustic Series

12", 16", 20" and 24" Hinges

\* Includes stainless steel screws and a carriage bolt with painted head

### RUSH112-BK

- » 12" pair of black hinges
- » 1/2" pin
- » Powder coated finish

### RUSH120-BK

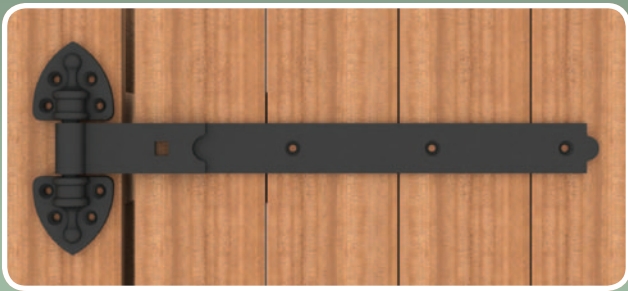
- » 20" pair of black hinges
- » 5/8" pin
- » Powder coated finish

### RUSH116-BK

- » 16" pair of black hinges
- » 1/2" pin
- » Powder coated finish

### RUSH124-BK

- » 24" pair of black hinges
- » 5/8" pin
- » Powder coated finish



## Twisted Ring Latch

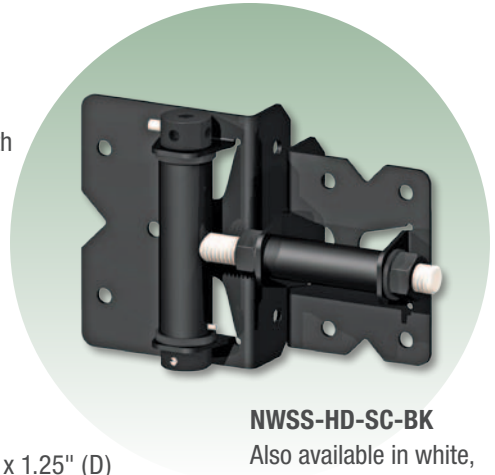
- » Operates from either side
- » Fits Gates up to 5" thick
- » Powder coated finish
- » Stainless steel screws included



## Adjustable Heavy Duty Stainless Steel Self-Closing Hinge Designed for larger, heavier vinyl gates



- » Large spring provides increased closing power
- » Very easy tension adjustment with the enclosed ¼" Allen wrench
- » Larger holding pins for easier handling



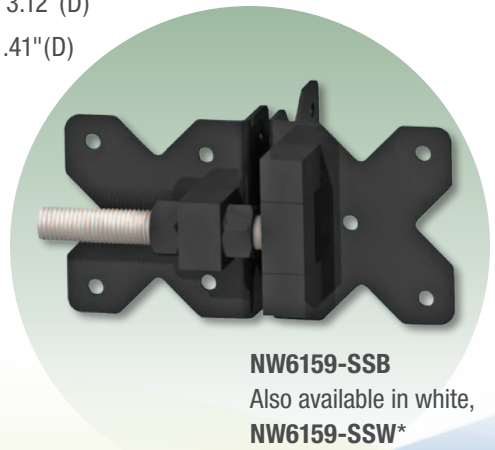
### Narrow to Narrow Depth Fits Most Gates

- » Post flange: 4.5" (H) x 3.25" (W) x 1.25" (D)
- » Gate flange: 3.5" (H) x 2.75" (W) x 1.25" (D)
- » Horizontally adjustable
- » Enclosed spring with tension adjustment
- » Stainless Steel screws included

**NWSS-HD-SC-BK**  
Also available in white,  
**NWSS-HD-SC-WH\***

## Stainless Steel V-Notch™ Hinge Heavy Duty Standard to Narrow

- » Post flange: 3.5"(H) x 3.12"(W) x 3.12"(D)
- » Gate flange: 3.5"(H) x 3.12"(W) 1.41"(D)
- » Heavy Duty 5/8" threaded rod
- » Horizontally adjustable
- » Stainless steel screws included



Ask about our entire line  
of V-Notch™ Hardware

**NW6159-SSB**  
Also available in white,  
**NW6159-SSW\***



Ltd  
**LIFETIME**  
Warranty!



View of Button Side

Stainless steel striker bar with anti-pull through enlarged tip

Bottom thumb latch protected from rain and dirt

## The Keystone® Advantage Series 2 Sided Lockable Latch

### For Vinyl, Metal and Wood Gates

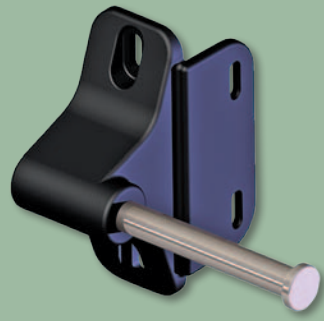
Secure your client's property with Nationwide Industries Lockable Latches. Multiple gates to secure? Not a problem. Our locks can be keyed different or alike.

- » Stainless steel internal components
- » Reversible for right or left hand use

Available in Black or White

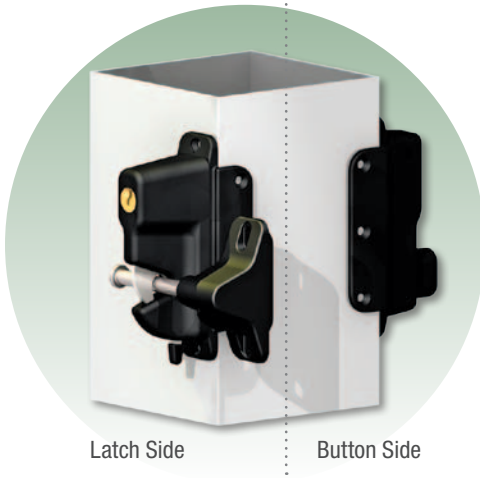


All KeyStone® Advantage 2-Sided Latches are packed with a durable Plastic Marking Template for **easy** installation



Heavy Duty Striker Design on every Keystone® Latch

## The Keystone® Advantage Series 2 Sided Lockable Latch



- KLADV-P2** (Glass-filled Nylon)
- KLADV-M2** (Zinc Diecast)
- » Heavy Duty Commercial Grade
- » Key locking on both sides
- » Locks can be re-keyed to match home locks
- » Fits 2" - 5" Posts\*

**Thumb release button on one side, gravity latch lever on opposite side**

## The Keystone® Advantage Series 1 Sided Lockable Latch



- KLADV-P1** (Glass-filled Nylon)
- KLADV-M1** (Zinc Diecast)
- » Heavy Duty Commercial Grade
- » Key locking on both sides
- » Locks can be re-keyed to match home locks

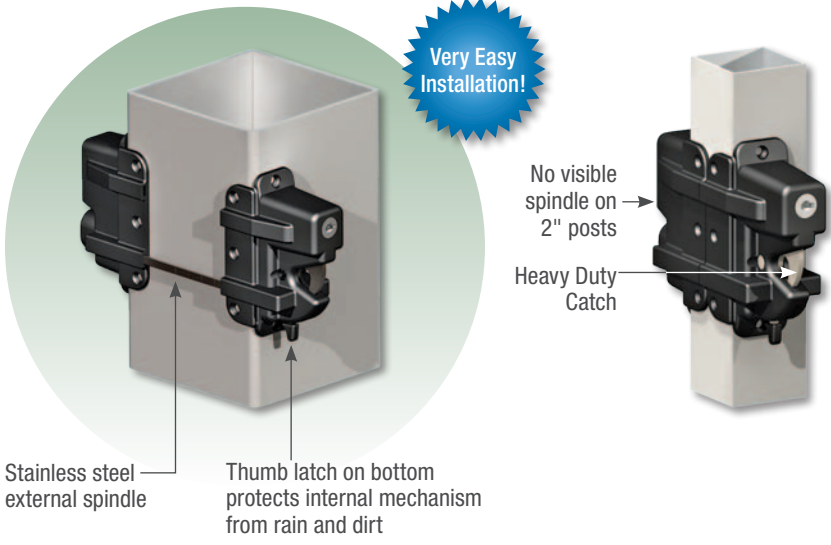
You may also need:

### Spindle Adaptor

**KLADV-SpinAdapt**

- » Extension Kit allows Two-Sided Keystone Advantage to be used on posts over 5" wide

The Keystone® X-eXternal Mount Latch  
 Best Stainless Steel External Spindle Design - Patent Pending



No need to drill spindle holes!

**Two-Sided**

**KLX-P2-BK** Black (Nylon)

- » Marked in 1/2" increments for quick, easy and accurate fitting to post sizes 2"- 5"
- » Flat design safely encloses spindle ends

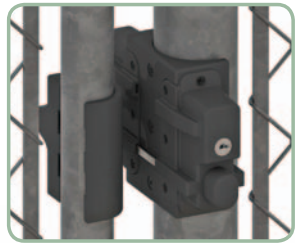
**One-Sided**

**KLX-P1-BK** Black (Nylon)

- » Features Latch only
- KLX-Spindle-10**
- » Longer spindle for gate frames over 5" thick



**Round Post Adapter for Chain Link Gates**



Back Side

**KLX-RPA-BK** Black

- » Includes mounting screws

» Tubing Size Chart available on page 13



## For Metal Gates

The patented OrnaMAG™ is a **MAGNETIC LATCH** with field proven internal parts offering an exciting alternative for metal gates. This key-locking latch is sure to add an elegant look that will compliment all styles of metal gate applications at a great price!

- » Accommodates up to a 2" gate post profile
- » Key Locking
- » Reversible for right or left hand use
- » No need to drill holes
- » Easy Installation for upgrades or retro fit.

## 2 Sets of Self-Drilling Screws Included

- » Stainless steel screws for aluminum gates
- » Zinc plated steel screws for steel gates



**Three finishes available; black, bronze and white**  
**Non-locking version also available**



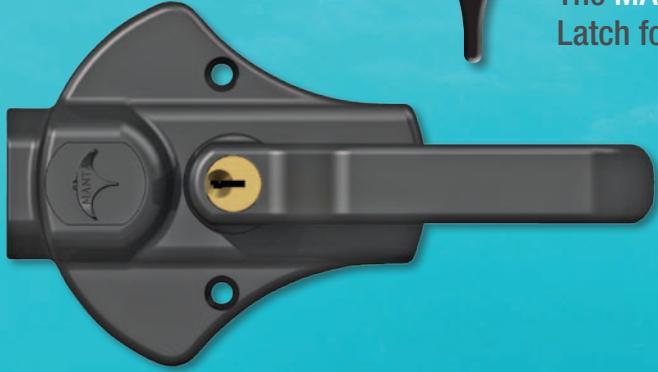
## Back Plates Included to Accommodate Gate Gap Variance

### Back Plate Gap Range:

- » Standard Back Plate 5/16" to 13/16"
- » Offset Back Plate 13/16" to 1-7/16"



The **MAGNETIC**  
Latch for **VINYL** Gates!



The patent-pending MANTA™ gate lock is an exciting new alternative to enhance gates, and the overall image of any fence.

The MANTA™ presents a great balance of elegance and functionality. This breakthrough design offers the best of all worlds. Attractive and easy to use handles, key locks providing accessibility from the front or back of a gate, and the powerful positive-locking feature of the Nationwide Industries magnetic system.

Magnetic, self-latching, key-lockable with an elegant look that will compliment any style.

- » Glass-filled nylon material for low maintenance, strength and durability.
- » Locks & unlocks from either side
- » Reversible for left or right hand use without changing components
- » Easy to install
- » Fits gate frames from 1-1/2" to 5"
- » Also great for some aluminum or wood gate applications
- » Re-keyable to home locks



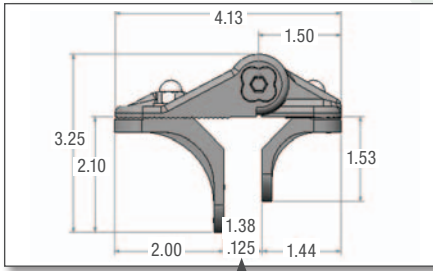
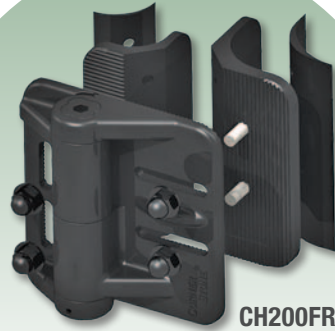
### Ordering Information:

Number	Quantity	Weight
<b>MANTA-L-BK</b>	12 per box	21 lbs
<b>MANTA-L-WH</b>	12 per box	21 lbs



## Cornerstone® Round Post Fully Adjustable Hinge for Chain Link Gates

- » Shims included to fit hinge to different gate and post sizes
- » Horizontally Adjustable up to 1 1/4"
- » Vertically Adjustable up to 1/2"
- » Fits both right and left hand applications
- » Includes Steel Self-Drilling Screws



Double dimensions indicate range of adjustability

### Tube Size Chart

Gate Frame Sizes	Fence Post Sizes
1 3/8"	1 7/8" / 2"
1 5/8"	2 3/8"
	2 5/8"
	2 7/8"

## Round Post Adapter for Pool Latch

- » Shims included in adapter kit to fit AquaLatch™
- » For different chain link gate and post sizes – See Tubing Size Chart above.



# AQUALATCH™

The MAGNETIC Gate Safety Lock with **SAFE-ALERT™**

AquaLatch™ Magnetic Gate Safety Lock

## 20" Height

Heavy Duty Screw Thread for easy adjustment

2" Vertical Adjustment

1-1/2" Horizontal Adjustment



Enhanced Knob Design

45 Degree Key Hole Angle

Allows easy access to the key hole

### SAFE-ALERT™

The AquaLatch is the only pool latch with Safe-Alert! A visible red alert area under the release knob appears any time the latch is not engaged.

## 10" Height

Flush Surface Connections

No more overlapping sections on the housing



Handle Option\*  
Ideal for taller gates



Leveling Keeper  
Multi-directional leveling capabilities for gates installed out of plumb



Thru-Hole in Keeper  
New pass-through design eliminates water retention in keeper

**AQUALATCH™**...magnetic closing power, easy installation and guaranteed to last!



- » Heavy duty construction
- » Beautiful, modern design
- » Multi-directional leveling for misaligned gates
- » Excellent horizontal and vertical adjustability
- » Fits right or left handed gates
- » Industry-BEST Warranty

### Ordering Information:

Number	Color	Description	Height
<b>AQUA-10-BK</b>	Black	AquaLatch with Standard Keeper	10"
<b>AQUA-10-WH</b>	White	AquaLatch with Standard Keeper	10"
<b>AQUA-10H-BK</b>	Black	AquaLatch with Handle/Keeper	10"
<b>AQUA-10H-WH</b>	White	AquaLatch with Handle/Keeper	10"
<b>AQUA-20-BK</b>	Black	AquaLatch with Standard Keeper	20"
<b>AQUA-20-WH</b>	White	AquaLatch with Standard Keeper	20"
<b>AQUA-20H-BK</b>	Black	AquaLatch with Handle/Keeper	20"
<b>AQUA-20H-WH</b>	White	AquaLatch with Handle/Keeper	20"

Adapter available for use with round posts. Patent Pending  
Sold in packages of 20 Check local laws prior to use



## Nylon Gate Handles

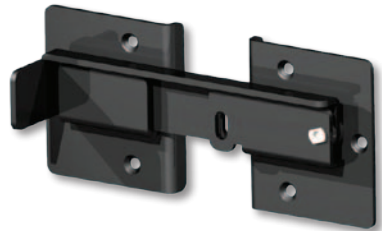
- » Made with durable glass-filled nylon with UV inhibitors
- » Very comfortable and easy to grasp
- » Extremely cost-effective
- » Stainless steel self-drilling screws included

## Handle with Gate Bumper

- » Rubber pad backing absorbs gate slamming shock, reduces latch wear

## Flip Latch

- » Commercial grade
- » Great for dumpster use
- » Pad-lockable
- » Zinc plate steel with black powder coated finish
- » Stainless steel through-bolt hardware included



**NW6169-BK**

## Improve the look and value of your whole fence by upgrading the finish on your hardware!

### Copper Finish for Vinyl

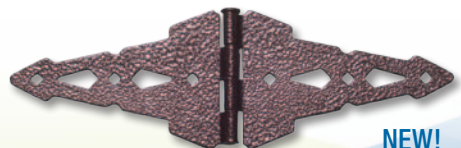
Stainless steel and brushed on a real copper finish. These products will produce a green patina over time.

- » Hinge – **NW171NASC-SSRC**
- » Latch – **NW38308NUA-SSRC**
- » Handle – **NW38396-SSRC**



### Hammered Bronze for Wood

- » Hinges: **NW38937Q-HBZ**  
**NW38944Q-HBZ**  
**NW38945Q-HBZ**
- » Latches: **NW38308Q-HBZ**  
**NW38310Q-HBZ**
- » Drop Rod: **NW38305-24Q-HBZ**



**NEW!**





## Braces for Vinyl and Wood Gates

- » Zinc plated steel construction
- » Available in black and white

### Fully Adjustable

- » Fits 4'x4' to 6' x 6' gates

### Sturdy Attachment Brackets



## Galvanized Steel Gate Post Stiffener

- NW6142-084** – 4" Profile 84" Height
- NW6142-096** – 4" Profile 96" Height
- NW6142-108** – 4" Profile 108" Height

- NW6146-084** – 5" Profile 84" Height
- NW6146-096** – 5" Profile 96" Height
- NW6146-108** – 5" Profile 108" Height

- » Cost-effective
- » Packaged in pairs
- » No minimum order requirements

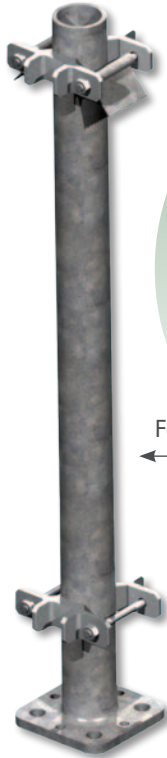
Stronger than Conventional Aluminum "I" Beams



Allows for 2-sided attachment of hardware

Great Alternative to Aluminum!

## Vinyl Railing Post Mounts



For 4" or 5" Posts

- » Code compliant within complete railing system
- » Brackets come attached to post for easy installation
- » Saves installation time
- » Available in 24", 36" and 42" heights

For 4" Posts  
in 24" Height

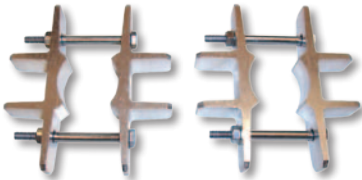


Easy bracket  
position adjustability

4 sides for secure  
hardware attachment

## Post Mount Bracket Sets

- » Brackets are made of extruded aluminum
- » Each kit includes 2 full brackets with four 3" stainless steel shoulder bolts and nuts



All  
Components  
Available  
Individually

- » Brackets
- » Poles
- » Plates

**NW6011** - Adapts a 1 5/8" round post for a 4" x 4" vinyl fence post

**NW6012** - Adapts a 1 7/8" round post for a 5" x 5" vinyl fence post

**NW6013** - Adapts a 1 7/8" round post for a 4" x 4" vinyl fence post

**NW6014** - Adapts a 1 5/8" round post for a 5" x 5" vinyl fence post

**Concrete Fasteners and Leveling Kit Available**

**Wood Mounting Kit Available**

## Gate Wheels for Large, Heavier Gates



### For Vinyl Gates

**GW1-SS-BK** Black

**GW1-SS-WH** White

- » Stainless steel bracket and spring
- » Composite wheel designed for rougher uneven surfaces and large temperature ranges
- » Swivel design for ease of use
- » 2-sided attachment for added strength
- » Easily reversible for use on left or right-handed gates
- » Nationwide's V-notch™ styling
- » May be used on any square profile
- » Powder-coated finish
- » Stainless steel screws included



### For Wood Gates

**GW2-BK** Black

- » Zinc plated steel with powder-coated finish
- » Composite wheel designed for rougher uneven surfaces and large temperature ranges
- » Swivel design for ease of use
- » Easily reversible for use on left or right-handed gates
- » Attaches easily
- » Nationwide's V-notch™ styling
- » May be used on any flat surface
- » Lag screws included



### For Chain Link Gates

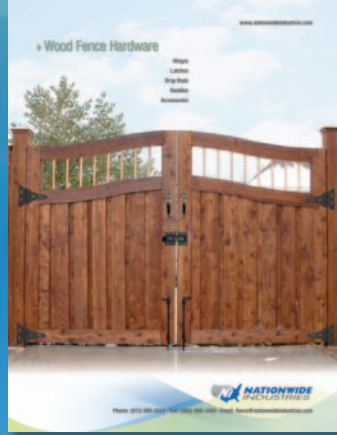
**GW3-BK** Black

- » Zinc plated steel with powder-coated finish
- » Composite wheel designed for rougher uneven surfaces and large temperature ranges
- » Swivel design for ease of use
- » Attaches easily
- » Nationwide's V-notch™ styling
- » May be used on any flat surface
- » Fit's 1 3/8", 1 5/8" and 2" size gate frames

# Ask about our complete line of hardware!



Vinyl Fence Hardware Catalog



Wood Fence Hardware Catalog



Ornamental Fence Hardware Catalog



Cantilever Gate Rollers and Accessories

**CornerStone®**  
The Million Cycle  
Self-Closing Nylon Hinges

**Keystone® Advantage**  
Heavy Duty  
Key-Lockable Latches

**Keystone® X**  
eXternal Mount  
Key-Lockable Latches

**OrnaMAG™**  
Magnetic  
Metal Latches

**Manta™**  
Magnetic  
Nylon Latches

**AquaLatch™**  
Magnetic Pool  
Safety Latches

**Protector®**  
Magnetic Pool  
Safety Latches

**V-Notch™**  
Hinges and  
Latches



**VINYL FENCE, DECK AND RAILING  
MANUFACTURERS ASSOCIATION**  
A Division of the American Fence Association



**NATIONWIDE  
INDUSTRIES**

Phone: (813) 988-2628  
Fax (866) 988-3465  
fence@nationwideindustries.com  
www.nationwideindustries.com