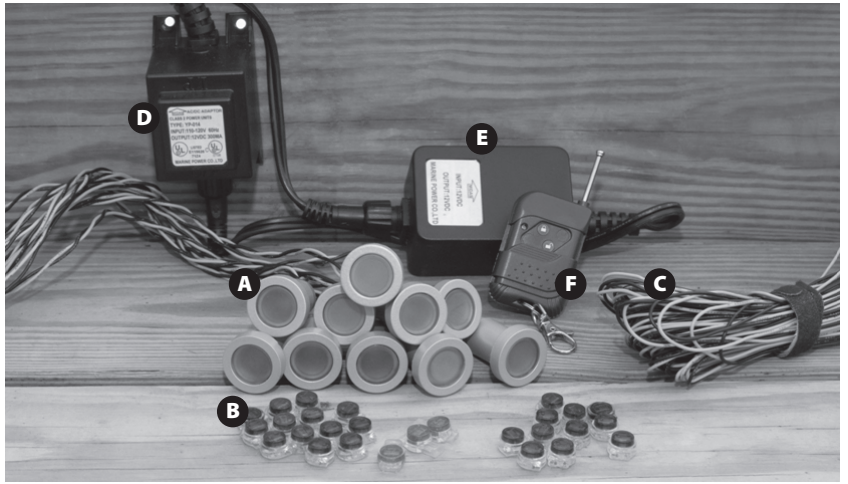


PHOENIX RECESSED LIGHTING KIT

YOUR COMPLETE KIT INCLUDES:

- A. 10 LED Flush-mount Deck/Stair Lights
- B. 27 Connectors
- C. 100' of Twisted Cable Wire
- D. LED Driver Box with Power Cord
(Capacity up to 40 lights)
- E. Remote Driver
- F. Remote Control



REQUIREMENTS:

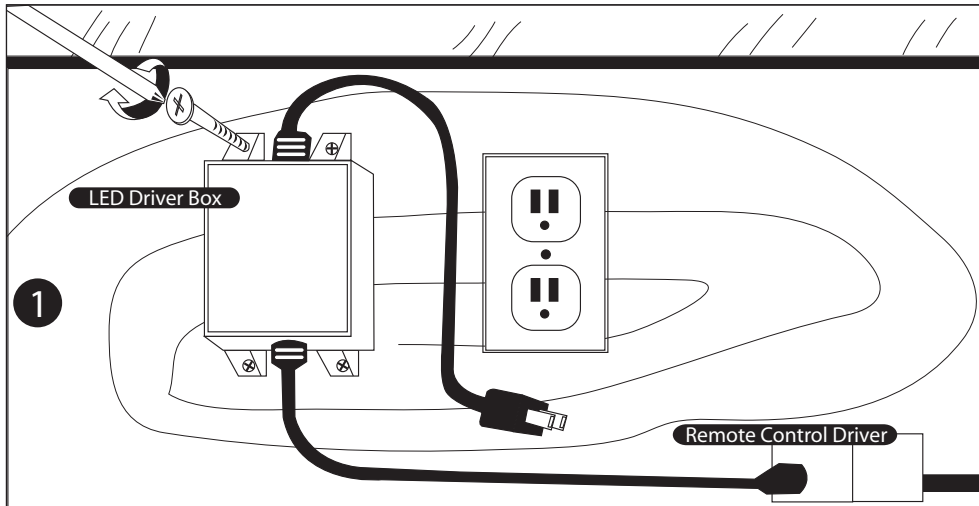
Before you begin, make sure you have an external, weatherproof, protected 110 volt outlet that meets GFCI (ground fault circuit interrupter) standards. Mount the LED Driver Box 18 inches above the ground. Best results can be achieved when you have access to the underside of your deck or installation surface. Do not install more than 40 Phoenix decklights on one driver box.

TOOLS:

Power Drill • 1-1/8" spade bit or forstner bit • 3/4" spade bit or forstner bit • Two Wood Screws • Screwdriver • Pliers
Chisel • Tape Measure • Clear silicone caulk or sealant • Eye protection

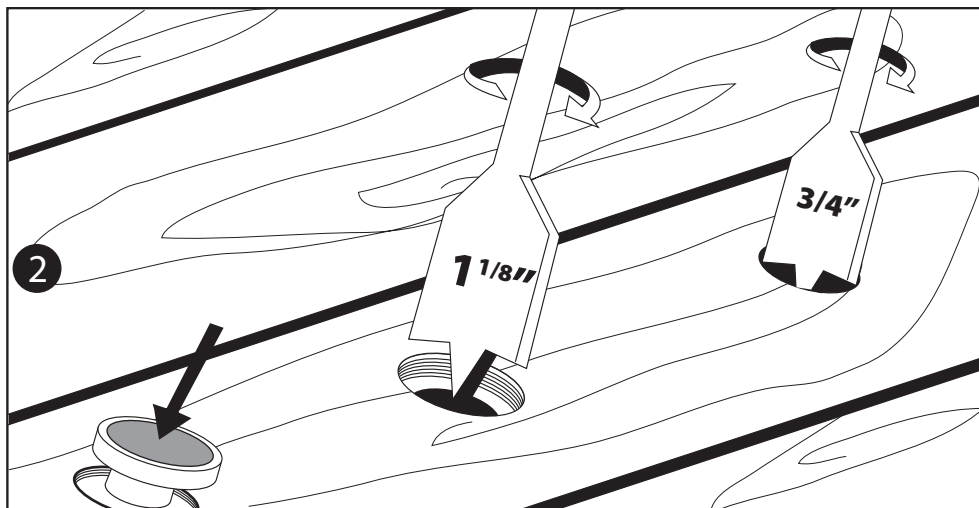
Installation Instructions

CAUTION: Use eye protection when using power tools. Do not install more than 40 deck lights on one driver box. Do not install within 10 feet of a pool, fountain or spa.



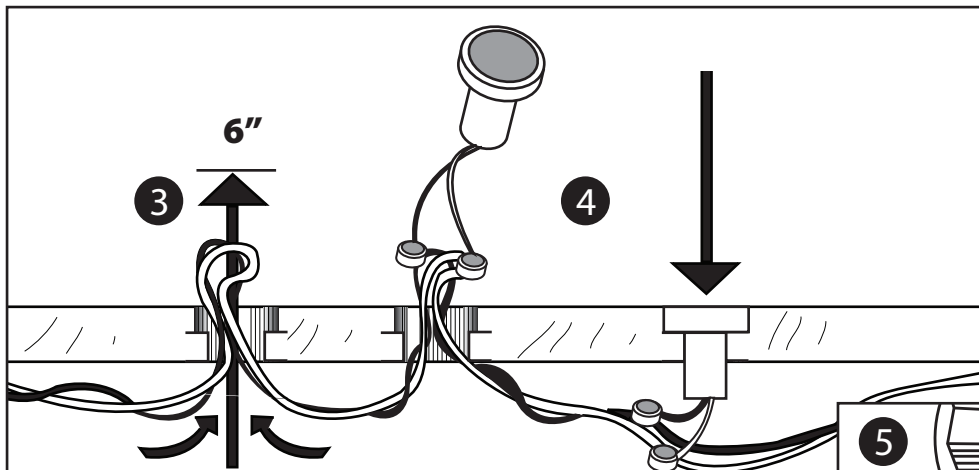
Mount the LED Driver Box 18 inches above the ground near your outlet using screws. Do not plug it in. [ILLUS. 1]

Determine the spacing of your lights on your deck. Be sure to avoid positioning lights over joists and headers or on spacing gaps. For best results, place your lights three to six feet apart. Keep in mind that your farthest light can be no more than 100 feet from the LED Driver Box using the wire included in this kit.



[ILLUS. 2] For each light, using a spade bit or forstner bit, drill a 1-1/8" hole approximately 1/4" deep. Check the depth by placing one of the LED lights upside down in the hole until the shoulder is flush with the decking surface. The bottom of your hole needs to be flat so the light lays in correctly. If necessary, use a chisel to scrape away excess material to flatten the bottom of the 1/4" hole.

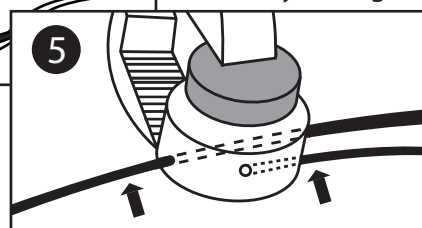
Change to a 3/4" spade bit or forstner bit and start in the center of your hole and bore through the decking. This creates the hole for the base of the light and for the wires. Drill all holes to size.



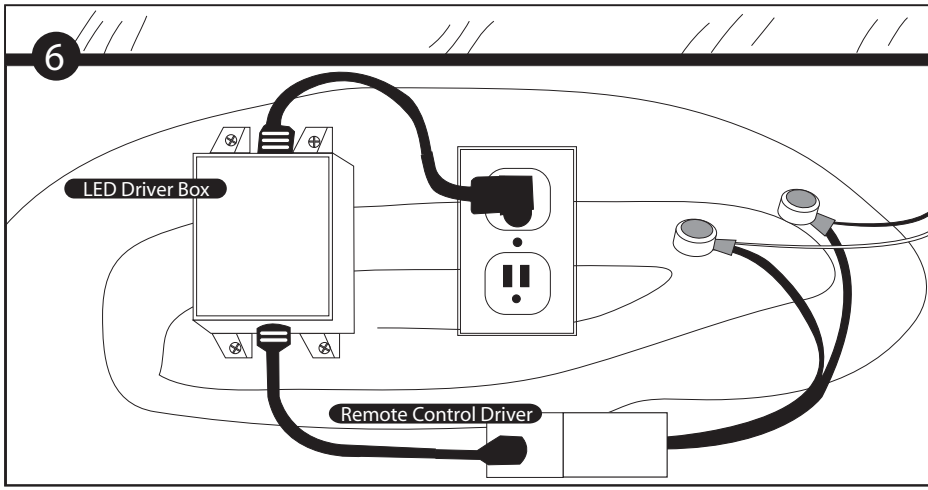
[ILLUS. 3] Starting with the hole farthest from the power source, run the 100 feet of twisted cable wire below the deck and up through each hole, leaving six inches of slack above each deck to allow for connections. NOTE: The farthest end of the wire will be capped with a red connector at the end of your installation.

[ILLUS. 4] To install a light module, untwist the wire coming up from below the hole in the center of the slack. There is no need to cut or strip the wire. Use two green connectors for each light. First insert the black twisted wire into the open side of a connector so that it fits snugly in the space provided. It will go all the way through the connector. Then

[ILLUS. 5] Squeeze the connector closed using a pair of pliers. Repeat this process to connect the gray twisted wire and the gray wire from the light fixture using another green connector. Connect all lights to the wire in this manner.



take the black wire from the light and insert it into the other hole in that connector. Push the wire from the light in until it stops.

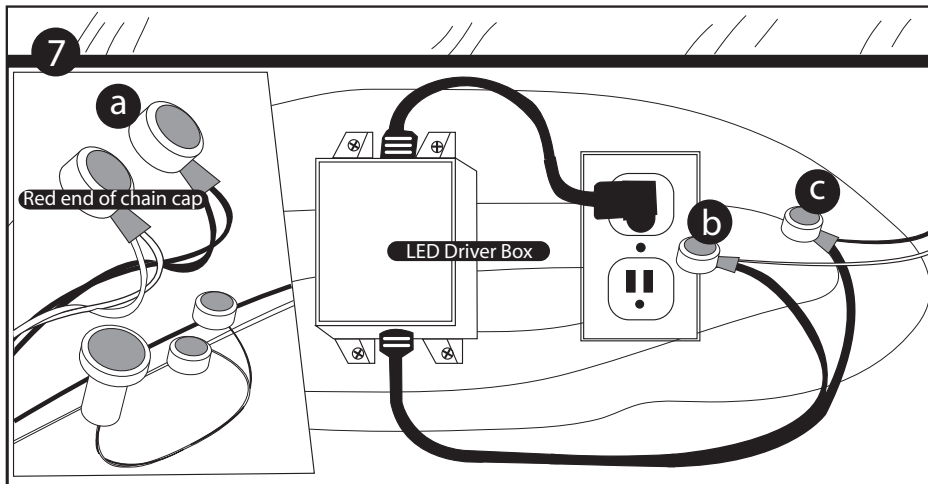


[ILLUS.6] Once all of the LED deck lights have been connected to the wire, connect the end of the twisted wire to the Remote Control Driver using two red connectors.

Use of the remote control is optional and the Remote Control Driver can be bypassed by removing it from the LED Driver Box. [ILLUS.7]

When all lights are installed, cap the ends of the twisted wire separately with the red connectors. Caution: Do not connect the ends together as this will short out the system.

Plug in the power source to make sure all lights are working properly. Unplug before proceeding to the final steps.

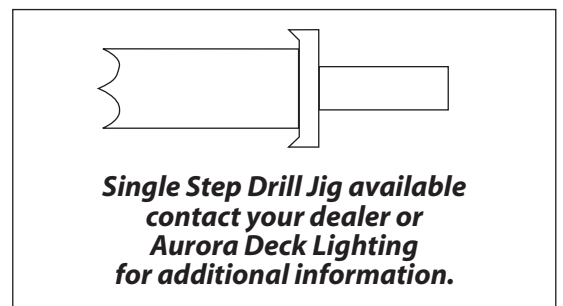
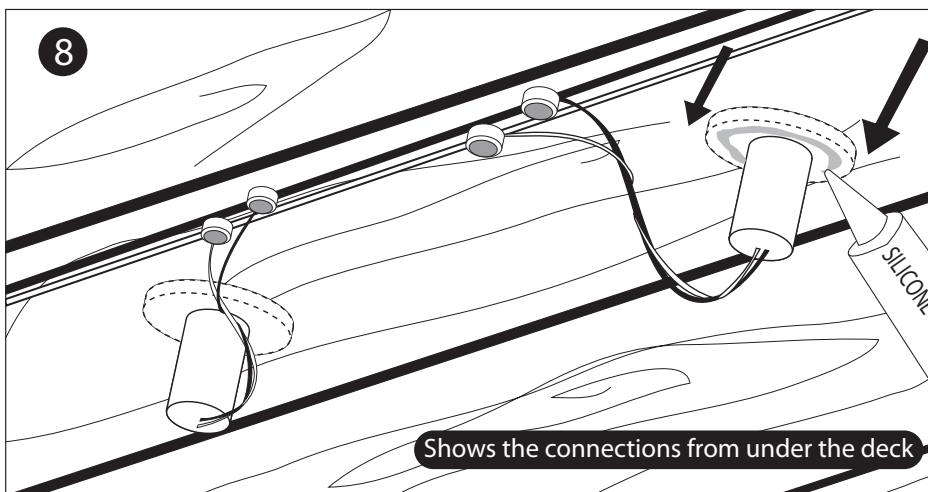


[ILLUS.8] Run a bead of silicone sealant or caulk around the underside of the lip of the light fixtures and feed the wires back through the hole and place the fixture into place. Make sure the module is flush with the decking.

[Finally] Plug in the power cord, and operate using either the remote control or the light switch.

TROUBLE SHOOTING TIPS:

Make sure all wires are connected in like color pairs. Make sure the remote control has a battery and it is installed correctly. If you choose to bypass the remote, be sure to remove the remote driver from the set-up and connect the twisted pair wires directly to the power box.



For additional questions, call: 800 603 3520.

Warranty Information

The Phoenix Recessed Lighting Kit is covered by a one year limited warranty.

This product is warranted against defects in materials or workmanship as follows:

Units will be repaired or replaced, at our option, without charge for parts or labor for one year from date of purchase. Repairs and parts fees are the responsibility of the product owner after the indicated period of one year. The limited warranty cannot be transferred and is valid only for the purchaser of the product. It does not cover damage or failure caused by or attributable to natural disaster, abuse, misuse, improper or abnormal use, faulty installation, improper maintenance, lightning, or other incidences of excessive voltage, or any repairs or tampering by other than our Warranty Services Department. Products proven defective in workmanship or material are covered solely by the remedies of repair or replacement as provided by the terms of this warranty. Under no circumstances shall Aurora Deck Lighting be liable for any loss or damage, direct, or incidental, arising out of the use of or inability to use this product. Some states do not allow limitations on how long an implied warranty lasts or the exclusions or limitations of incidental or consequential damages, so the above limitations may not apply to product owners in certain states.

To obtain warranty service, call 800 603 3520 for a return merchandise authorization number, and send the product with a copy of the sales receipt and a description of the problem, along with your name, address, and phone number to:



Aurora Deck Lighting
960 E. Milwaukee Street
Whitewater, WI 53190
www.auroradecklighting.com

Repairs will be returned to the customer using UPS Ground service. Other carriers may be used at our option. If faster delivery is requested, the product owner must pay the cost difference over the UPS Ground service charge. Aurora Deck Lighting is not liable for products lost or damaged during shipment.