

2' MAIN EXTENSION HARNESS



#1591

7' MAIN EXTENSION HARNESS



#1592

9' MAIN EXTENSION HARNESS



#1593

2' MAIN TO LIGHT HARNESS



#1594

5' MAIN TO LIGHT HARNESS



#1595

LOW VOLTAGE DC ACCENT LIGHTING

Simple and Easy to Install

- No wires to cut – plug together wiring harness
- Single power supply for all lights
- No need for an electrician

Long Lasting

- Weather resistant connectors and lights
- Long-lasting LED bulbs rated at 50,000 hours
- Housings are Durable and UV Stable

Highly Energy Efficient

- Low Voltage DC Power Supply
- Dusk to Dawn light sensor
- Available with remote dimmer switch



No Wire Cutting

Authorized Dealer:

www.outdoor-accentlighting.com

B-LED



Our mission is to provide contractors and homeowners LED lighting solutions that are easy to install, reliable and affordable while offering unsurpassed customer service. Add safety, security, ambiance and increase enjoyment of your outdoor living space.



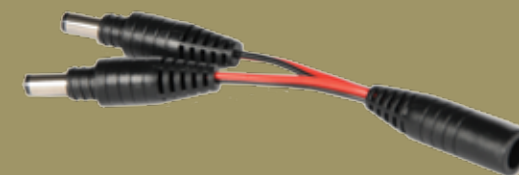
www.outdoor-accentlighting.com

TEE CONNECTOR WITH CAPS



#1596

MAIN TO 2 LIGHTS SPLITTER



#1597

12 WATT POWER SUPPLY WITH PHOTO EYE

Turns on/off by solar sensor



#1589

Will power approximately a maximum of 16 lights

50 WATT POWER SUPPLY WITH PHOTO EYE, TIMER & REMOTE

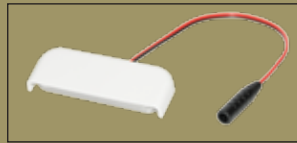
Turns on/off by either solar sensor, timer or remote



#1590

Will power approximately a maximum of 65 lights

STAIR/SIDE LIGHT WITH (2) EA. COVERS



Colors Available	
White, Almond, Beige, Khaki	
1.130" x 3.223"	#1598

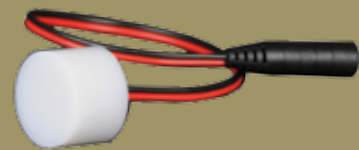
Each Stairlight includes both a full and half cover allowing you to choose the look you prefer.

DOME SIDE LIGHT



Colors Available	
White, Almond, Beige, Khaki	
2.75" x 1.344"	#1599

FLUSH DECK LIGHT



Colors Available	
Frosted Acrylic	
0.995" x 0.685"	#1600



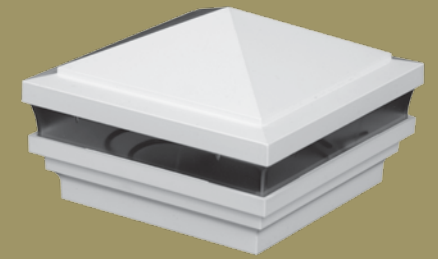
Designer Products

Visit our interactive site www.designerpostcaps.com for our full product line and to customize your products.

Our Designer product line is an innovative metallic and ceramic powder coated injection molded product line to enhance your fence, deck, and handrails. The Designer product line includes solar lighted post caps, low voltage lighted post caps, post skirts, and a variety of post cap designs using accent colors with textured finishes. They will not tarnish like stamped metal post caps.

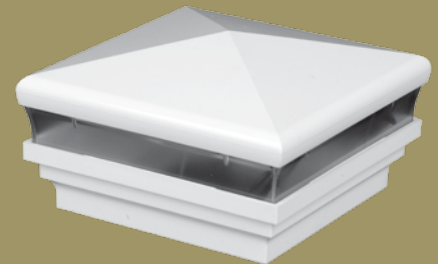


HAVEN



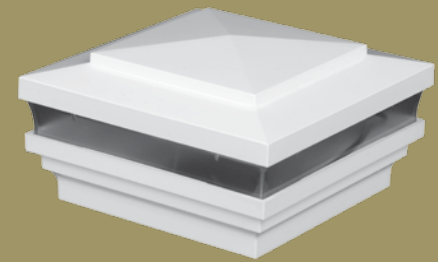
Sizes	Low Voltage LED	Colors Available
• 3-5/8"	#1488	 White, Almond, Beige, Khaki Available in Designer Finishes
• 4"	#1489	
• 4-1/2"	#1565	
• 5"	#1511	
• 5-5/8"	#1512	
• 6"	#1513	

NEPTUNE



Sizes	Low Voltage LED	Colors Available
• 3-5/8"	#1484	 White, Almond, Beige, Khaki Available in Designer Finishes
• 4"	#1485	
• 4-1/2"	#1563	
• 5"	#1505	
• 5-5/8"	#1506	
• 6"	#1507	

CAPE MAY



Sizes	Low Voltage LED	Colors Available
• 3-5/8"	#1486	 White, Almond, Beige, Khaki Available in Designer Finishes
• 4"	#1487	
• 4-1/2"	#1561	
• 5"	#1508	
• 5-5/8"	#1509	
• 6"	#1510	